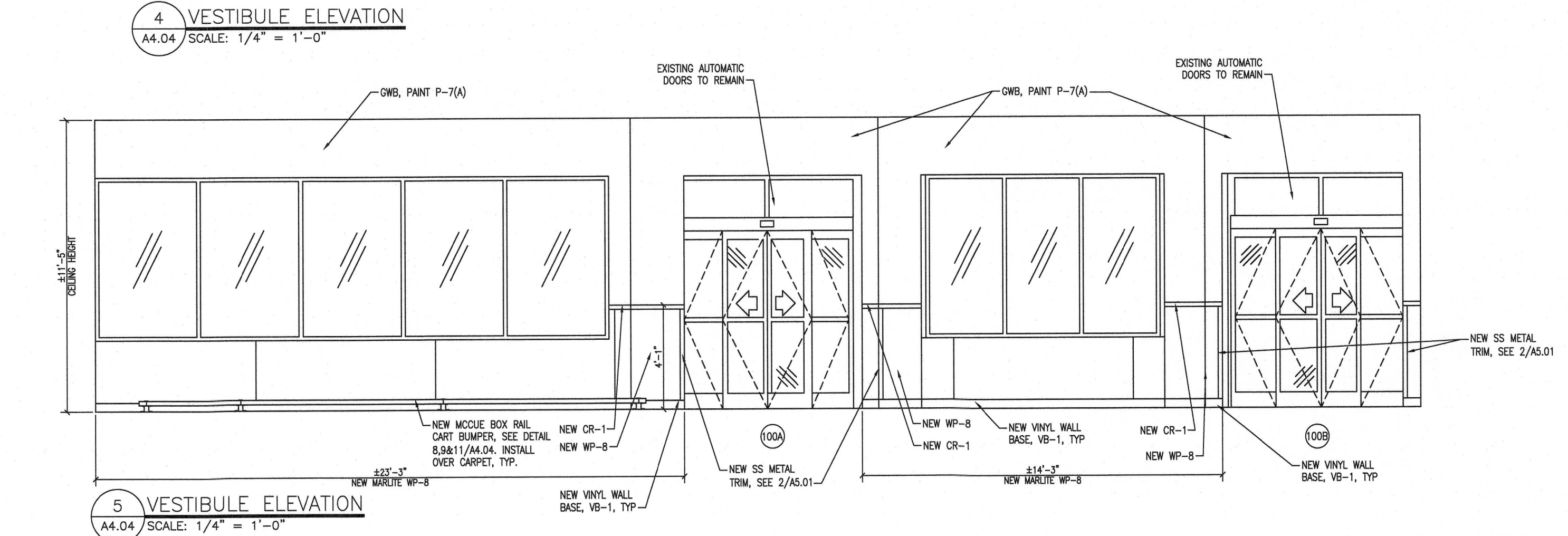
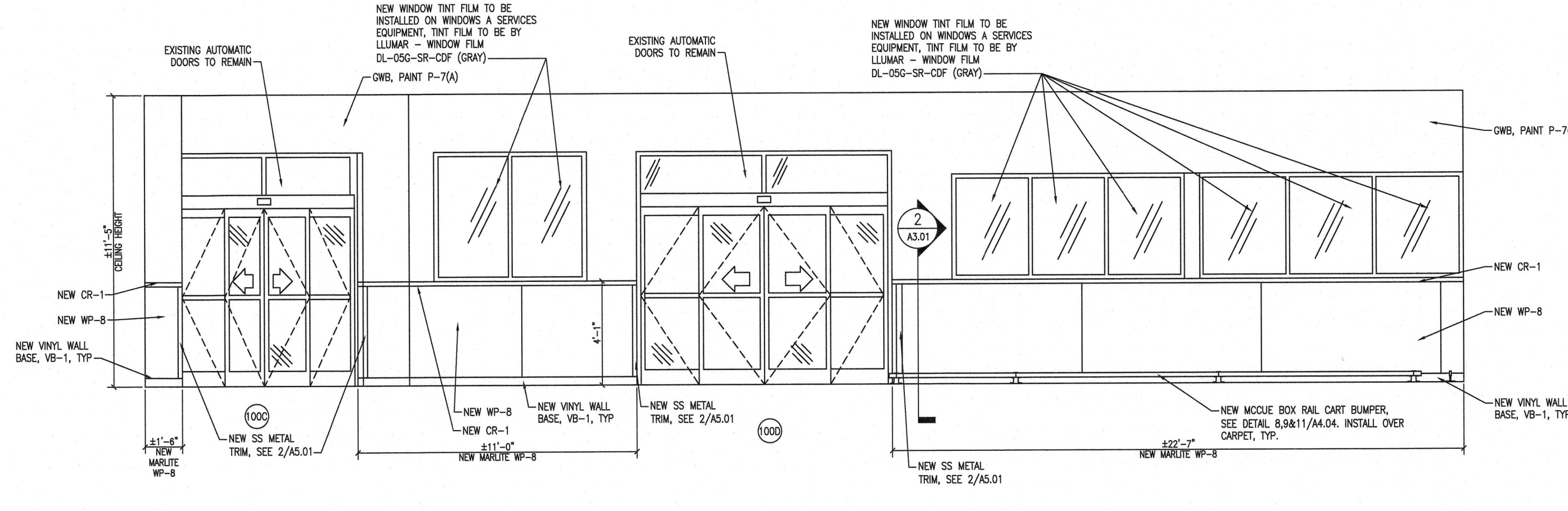
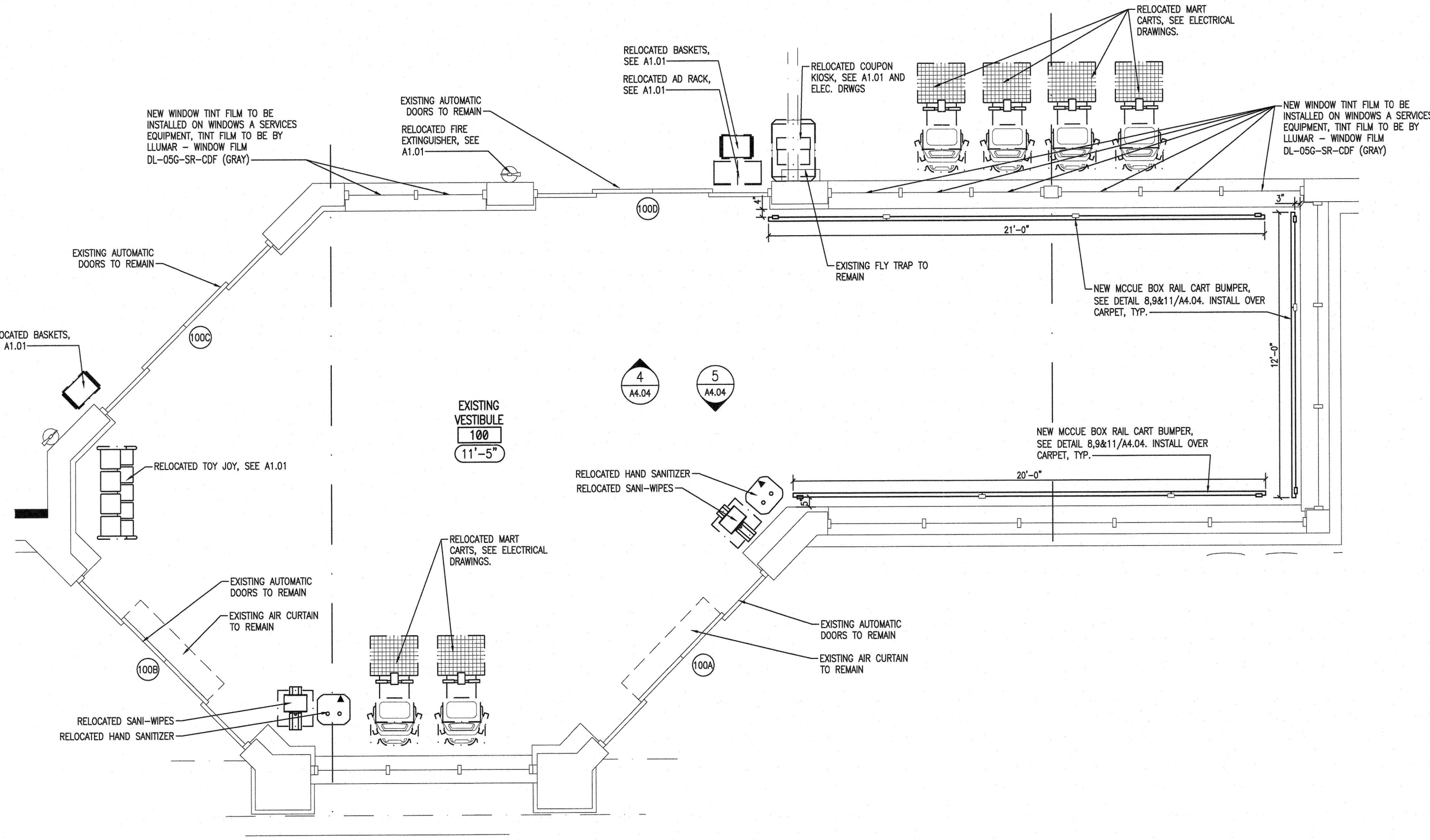


6 NOT USED
A4.04 / N.T.S.

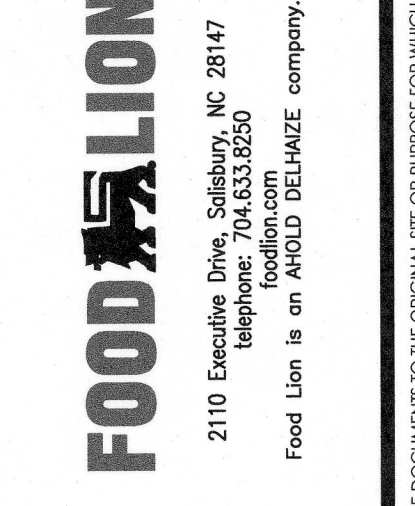
9 NOT USED
A4.04 / N.T.S.

MANUFACTURED BY:			
McCUE CORP. PHONE # 1-800 (800-8503)			
BOSTON GROUP PHONE # 1-617 (974-9574)			
BOX RAIL CHART			
QUANTITY	DESCRIPTION	McCUE	BOSTON
QUANTITY (8)	8' BOX RAIL	CSB-96	BOX7-BRL
QUANTITY (11)	LEGS	CSB-LLK	BOX7-LLK
QUANTITY (6)	END CAPS	CSB-00	BOX7-REC
QUANTITY (5)	CONNECTORS	CSB-C	
QUANTITY (XX)	ANCHORS	110-0.625x4-COA	
QUANTITY (XX)	MIDDLE BRACKET	BOX7-BRKT-M	
QUANTITY (XX)	STANDARD BRACKET	BOX7-BRKT	

THE CART BUMBERS IN THE VESTIBULE ARE INTENDED TO PROTECT BOTH THE WALL AND THE CARTS. THE BUMBERS SHOULD BE FLOOR MOUNTED. BOX RAIL CART BUMBERS ARE AVAILABLE ONLY IN 8 FOOT LENGTHS. MANUFACTURED BY McCUE CORPORATION PHONE # 1-(800) 800-8503, OR BOSTON GROUP PHONE # 1-(617) 974-9574. GENERAL CONTRACTOR SHALL BE RESPONSIBLE FOR VERIFYING ALL QUANTITIES OF BOXRAIL COMPONENTS REQUIRED.



REVISIONS	NO	DATE	REMARKS



FOOD LION
REMODEL
STORE #2839
860 PARRIS ISLAND GTWY
BEAUFORT, SC 29906

PROJECT NO: 2021.1218
DATE: 7/5/22

20 OF 54
A4.04

ENLARGED CUSTOMER SERVICE & VESTIBULE PLANS
CHECKED: DNC DRAWN: EC