

ELECTRICAL DEFICIENCIES TO BE REPAIRED:  
1. EMERGENCY LIGHTING ALONG WITH SELECT NIGHT LIGHTING/CURRENTLY FED FROM PANEL EM.

SYMBOL LEGEND			
	NEW LIGHTS		EXISTING EXIT LIGHTS
	RELOCATED LIGHTS		NEW/RELOCATED EXIT
	EXISTING LIGHTS		EXISTING EMERGENCY LIGHT
	NEW NIGHT LIGHTS		NEW EMERGENCY LIGHT
	NEW LIGHTS WITH TUBE SHIELDS		ENERGY MANAGEMENT LOAD NUMBER
	EXISTING COOLER/FREEZER LIGHTS		NEW UP-LIGHTING
	NEW/RELOCATED COOLER/FREEZER LIGHTS		POWERED TRELLIS
			NON-POWERED TRELLIS

**GENERAL NOTES:**

- LIGHT FIXTURES SHALL BE MANUFACTURED BY LITHONIA UNLESS NOTED OTHERWISE. PURCHASE FROM SYLVANIA AT THE NATIONAL CONTRACT PRICE. FOR PURCHASE, CONTACT SYLVANIA AT 1-800-579-1514. THE ELECTRICAL CONTRACTOR SHALL BE RESPONSIBLE FOR VERIFYING ALL QUANTITIES, RATINGS, LENGTHS...ETC. ANY DISCREPANCIES SHALL BE RESOLVED WITH SYLVANIA PRIOR TO BID. CONTRACTOR SHALL BE RESPONSIBLE FOR ANY ADDITION TO THE BILL OF MATERIALS DUE TO LOCAL, STATE GOVERNMENTAL CODES.
- EMERGENCY & EXIT LIGHTS SHOWN ARE A MINIMUM. ENGINEER OF RECORD SHALL PROVIDE EMERGENCY LIGHT FIXTURES IN ACCORDANCE WITH LIFE SAFETY CODE 101 SECTION 5-9 AND LOCAL ORDINANCE.
- ALL JUNCTION BOXES LOCATED IN NEW COOLERS & FREEZERS ARE TO BE WEATHERPROOF. AFTER WIRING IS COMPLETE, SEAL ALL PENETRATIONS PER NEC 370-15 TO PREVENT MOISTURE TRANSFER AND ACCUMULATION. ANY MOISTURE ACCUMULATION/CONDENSATION OR ICE PRESENT WITHIN A REFRIGERATED SPACE, CONDUIT BODY, ELECTRICAL BOX OR FIXTURE SHALL BE REMOVED WHILE THE ENTRY POINT IS PROPERLY REPAIRED/SEALED.
- ALL NEW LIGHT SWITCHES ARE TO BE MOUNTED NO MORE THAN 48" A.F.F. PER THE REQUIREMENTS OF A.D.A.
- ELECTRICAL CONTRACTOR IS RESPONSIBLE FOR RUNNING ALL NEW WIRING TO PANELS & CONNECTION OF ALL FIXTURES. ELECTRICAL CONTRACTOR SHALL SUPPLY & INSTALL END CAPS ON BOTH ENDS OF EVERY NEW LIGHT FIXTURE RUN. NO END CAPS SHALL BE INSTALLED BETWEEN TWO ADJOINING FIXTURES.
- ELECTRICAL CONTRACTOR SHALL SUPPLY & INSTALL JUNCTION BOXES ABOVE BAR JOISTS IN THE BAR JOISTS UNLESS INDICATED OTHERWISE. THE ELECTRICAL CONTRACTOR SHALL VERIFY SIZE WITH EQUIPMENT AND SUPPLY ALL NEW BREAKERS AND RE-SIZED BREAKERS FOR EXISTING CIRCUITS AS REQUIRED.
- ALL NEW WIRING SHALL BE DONE IN STRICT ACCORDANCE WITH N.E.C. STANDARDS AND WITH FOOD LION STANDARDS. NO SLOPPY OR HAZARDOUS WORK WILL BE ACCEPTED. NO COLOR CHANGES IN WIRE RUNS, MISLABELED CIRCUITS, ETC.
- ELECTRICAL CONTRACTOR IS TO MAKE SURE THAT NO MC OR FLEX CABLES ARE USED UNLESS OTHERWISE NOTED. MC OR FLEX CABLES CAN ONLY BE USED IN SHORT RUNS FOR LIGHTING FEEDS. ELECTRICAL METAL TUBING MUST BE USED TO CONNECT PANEL TO JUNCTION BOX AND HAVE COMPRESSION-TYPE FITTINGS. SEE SPECIFICATIONS FOR STANDARD PRACTICES.
- ELECTRICAL CONTRACTOR SHALL INSTALL WIRE GUARDS OVER NEW LIGHTS ON 8'-0" CEILINGS OR LOWER THROUGHOUT THE ENTIRE STORE.
- PROVIDE TUBE SHIELDS FOR ALL NEW LAMPS IDENTIFIED WITH "TS" INCLUDING BUT NOT LIMITED TO FIXTURES IN PRODUCE PREP AND PRODUCE SALES. SEE LIGHTING FIXTURE SCHEDULE ON SHEET E6.02.
- ALL UP-LIGHTING ATOP THE PERIMETER HIGH DECK REFRIGERATED CASES SHALL BE TYPE "QZ1" OR "QZ11" (SEE LIGHT FIXTURE SCHEDULE ON SHEET E6.02). UP-LIGHTING SHALL BE INSTALLED THRU THE ENERGY MANAGEMENT SYSTEM; REFER TO E6.03 FOR CORRECT LOAD #. INSTALL A COMBINATION OF 4" AND 8" LIGHT FIXTURES ABOVE THE CASES FOR EVEN LIGHT DISTRIBUTION ALONG THE WALLS. EXAMPLE: 8" CASE SHOULD GET (2) 4" LIGHT FIXTURES OVERLAPPED. LIGHTING TO BE INSTALLED AT LEAST 8" IN FROM THE EDGES OF THE CASES AND AS CLOSE TO THE FRONT OF THE CASE AS THE VALANCE WILL ALLOW.
- THE FOOD LION STOREFRONT SIGN IS FURNISHED & INSTALLED BY OTHERS. THE ELECTRICAL CONTRACTOR SHALL PROVIDE PIG-TAILS, FINAL CONNECT WIRE STOREFRONT SIGN AND WIRE TO APPROPRIATE CIRCUITS.
- ANY LIGHT FIXTURES TO BE REUSED ARE TO BE REMOVED AND STORED IN A MANNER THAT RENDERS THEM REUSABLE IN A SECURED TRAILER BY THE GC./EC.
- ALL "T" LIGHTING SHALL BE ON A DEDICATED OR LABELED CIRCUIT AND BE ON THE LINE SIDE OF ANY ENERGY MANAGEMENT CONTROLS.

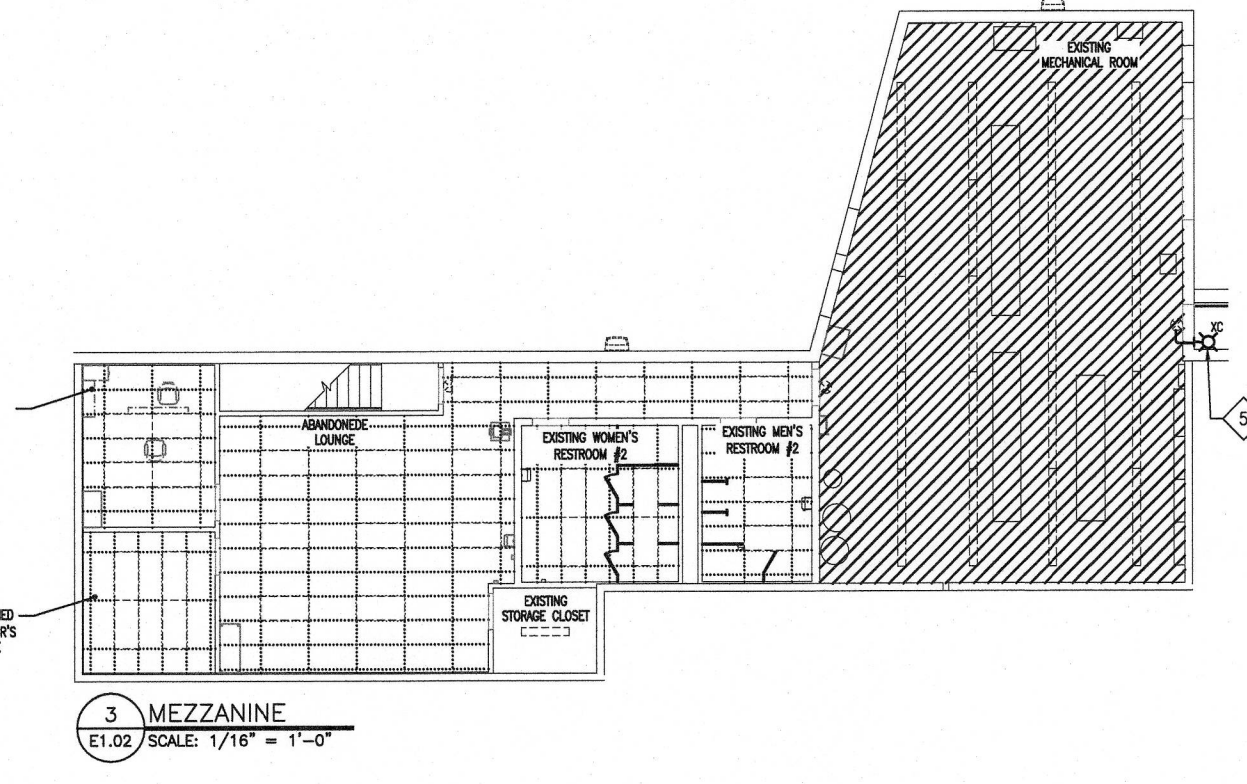
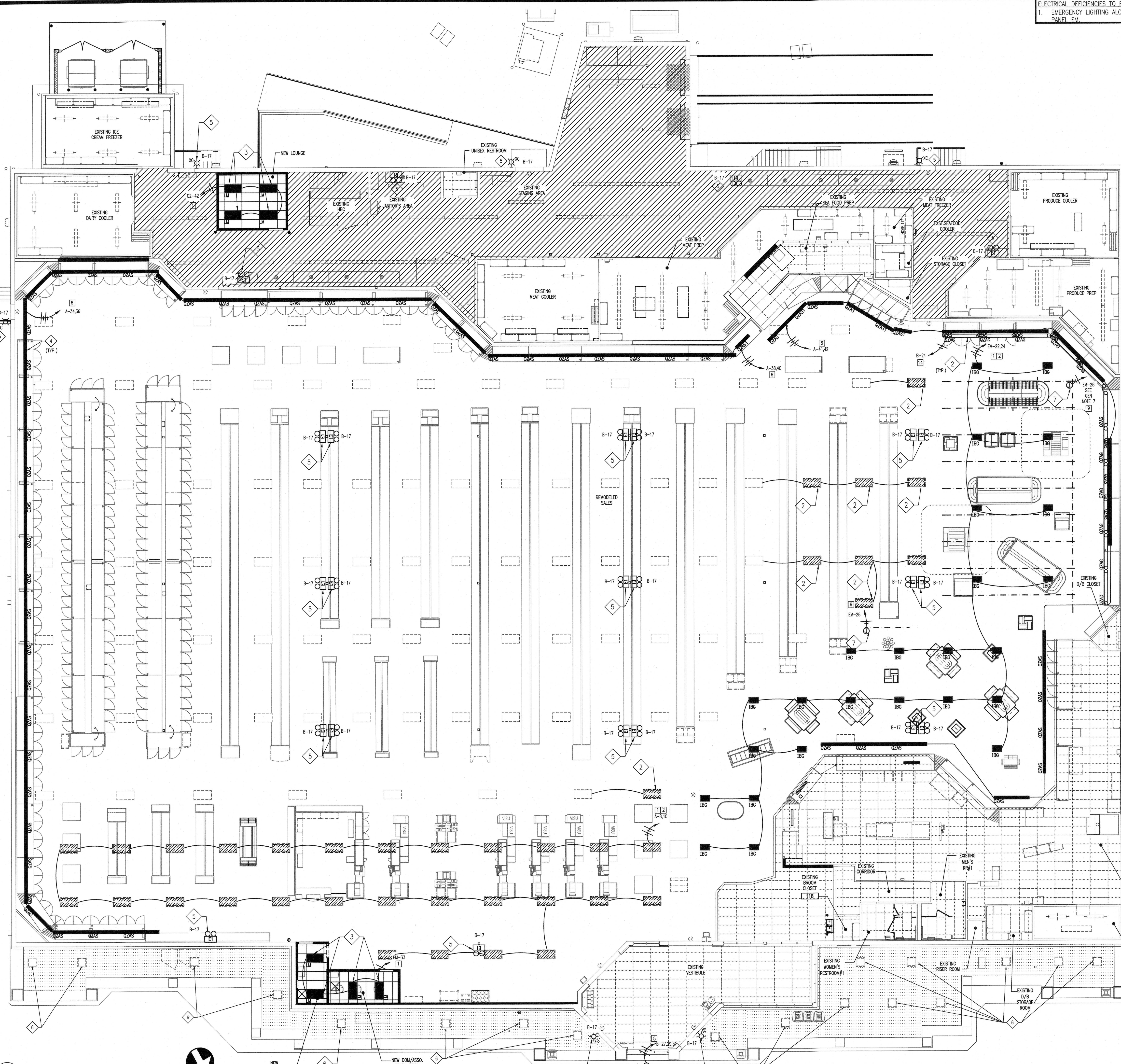
REFER TO SHEET E6.02 FOR LIGHT FIXTURE SCHEDULE  
REFER TO SHEET E6.03 FOR ENERGY MANAGEMENT SYSTEM NOTES

**HANGING TRACK SYSTEM NOTES: (SUPPLIED BY FOOD LION)**

- PRODUCE AREA EQUIPMENT: (SILVER LAYOUT)**  
2 CIRCUIT SILVER TRACK BY BUS STRUT, PROVIDED BY FOOD LION, INSTALLED BY DECOR VENDOR, WIRED BY ELECTRICAL CONTRACTOR.
- ELECTRICAL:**  
THE TRACK SYSTEM WILL HAVE A SINGLE CORNER DROP FROM A 4"x4" JUNCTION BOX STRATEGICALLY LOCATED IN THE BAR JOISTS ABOVE THIS AREA. BX CORD TO BE SILVER. ELECTRICAL CONTRACTOR TO PROVIDE TWO (2) 20 AMP CIRCUITS. ELECTRICIAN WILL NEED 90-DEGREE CONNECTOR INTO KNOCKOUT OF FITTING.
- TRELLIS SCENARIOS:**
- EXISTING TRELLIS (1 CIRCUIT TRACK) TO REMAIN- NO CHANGES. EXISTING TRELLIS WILL REMAIN ON SINGLE ELECTRICAL CIRCUIT AND EMS LOAD 1.
  - EXISTING TRELLIS (2 CIRCUIT TRACK) TO REMAIN- EC TO VERIFY 2 ELECTRICAL CIRCUITS ARE DEDICATED AND SPLIT 1/3 VS. 2/3 ON EMS LOADS 1 & 9.
  - EXISTING TRELLIS TO BE REPLACED WITH BUS STRUT- EC TO VERIFY 2 ELECTRICAL CIRCUITS ARE DEDICATED ON EMS LOADS 1.
  - NO TRELLIS EXISTING, ADDING BUS STRUT- REQUIRES 2 DEDICATED CIRCUITS, ON EMS LOADS 1.
- TRELLIS MOUNTING HEIGHTS (APPLICABLE TO NEW TRELLISES):**
- 10' AFF CEILING- MOUNT TRELLIS TO CEILING, MAINTAIN 8" MIN. HORIZONTAL CLEARANCE FROM SPRINKLER HEADS.
  - 11' AFF CEILING- MOUNT TRELLIS TO CEILING, MAINTAIN 8" MIN. HORIZONTAL CLEARANCE FROM SPRINKLER HEADS.
  - 12' AFF CEILING & HIGHER- MOUNT AT 10'-6" AFF.
  - GARDEN COOLER INTERIOR- MOUNT TRELLIS AT 10'-6" AFF
  - GARDEN COOLER SALES AREA- SEE ABOVE.
- BUS STRUT CONTACT:**  
ELIZABETH DURBIN (614)933-8695 X. 1006  
EADURBIN@BUSSTRUT.COM

**LIGHTING PLAN KEY NOTES**

- STORE FRONT SIGN TO BE REPLACED. RECONNECT TO EXISTING CIRCUITS. COORDINATE REQUIREMENTS WITH SIGN CONTRACTOR.
- EXISTING LIGHT FIXTURE, RELOCATED, EXTEND LIGHTING CIRCUITS FOR NEW LOCATION OF FIXTURE. FIELD VERIFY EXISTING CONDITIONS. DO NOT OVERLOAD EXISTING CIRCUITS.
- NEW LIGHT FIXTURE TO MATCH EXISTING, CONNECT TO EXISTING ELECTRICAL CIRCUIT. FIELD VERIFY EXISTING CONDITIONS; ELECTRICAL CONTRACTOR TO VERIFY EXISTING CIRCUIT IS NOT OVERLOADED.
- MOUNT TYPE "QZAG1" FIXTURES ON TOP OF REFRIGERATED CASES IN WALL-WASH CONFIGURATION, SEE GEN. NOTE #15.
- RECONNECT NEW LIGHTS TO EXISTING EMERGENCY CIRCUIT. ELECTRICAL CONTRACTOR TO VERIFY EXISTING CIRCUIT IS NOT OVERLOADED.
- CLEAN FRONT CANOPY LIGHT FIXTURES. COORDINATE WITH FOOD LION CONSTRUCTION MANAGER FOR MORE INFORMATION.
- NEW BUS-STRUT FIXTURE WIRED BY ELECTRICAL CONTRACTOR, INSTALLED BY DECORE CONTRACTOR AT 10'-6" AFF. COORDINATE POWER DROP WITH BUS STRUT SUBMITTAL.



**1 ELECTRICAL LIGHTING PLAN**  
E1.01 SCALE: 3/32" = 1'-0"

