

- LEGEND:**
- ⊕ QUAD RECEPTACLE
  - ⊙ JUNCTION BOX
  - WP WEATHERPROOF DUPLEX RECEPTACLE
  - GFI GROUND FAULT INTERRUPTING RECEPTACLE
  - IG ISOLATED GROUND RECEPTACLE
  - ⊕ SPECIAL USE RECEPTACLE, VOLTAGE, PHASE AND AMPERAGE BASED ON LOAD SERVED. COORDINATE NEMA CONFIGURATION WITH EQUIPMENT REQUIREMENTS.
  - ⊕ SWITCH
  - ⊕ FLOOR STUB UP
  - ⊕ DISCONNECT SWITCH-TYPE AS NOTED
  - ⊕ ELECTRICAL DROP FROM OVERHEAD
  - ⊕ EXISTING ELECTRICAL STUB-UP
  - ⊕ TELE-POWER POLE
  - ⊕ ELECTRICAL CONNECTION UNDER CASE
  - ⊕ MAGNETIC SWITCH (EXISTING)

- GENERAL NOTES:**
1. DIMENSIONS FOR CONDUIT STUB-UPS IN SALES AREA ARE TO BE HELD WITHIN 1".
  2. ANY EXPOSED CONDUIT IN PREP AREAS SHALL BE SECURELY FASTENED IN PLACE AS PER CODE.
  3. ALL DUPLEX RECEPTACLES SHALL BE MOUNTED 18" A.F.F. UNLESS NOTED OTHERWISE.
  4. THE CONDENSATION DRAIN HEAT TAPE RECEPTACLES FOR THE ICE CREAM/STORAGE AND MEAT/DELI/BAKERY FREEZERS SHALL BE INSTALLED TO CEILING NEAR THE DRAIN END OF EVAPORATOR AFTER THE EVAPORATOR HAS BEEN INSTALLED.
  5. THE MECHANICAL CONTRACTOR SHALL SUPPLY THE AIR CURTAINS, AIR CURTAIN MOUNTING BRACKETS AND MICRO-SWITCHES.
  6. THE ELECTRICAL CONTRACTOR SHALL INSTALL AND WIRE THE MICRO-SWITCH FOR AIR CURTAIN CONTROL.
  7. ALL NEW AND EXISTING RECEPTACLES IN PREP AREAS SHALL HAVE "IN-USE" WATERPROOF RECEPTACLE COVERS.
  8. ALL NEW DISCONNECTS SHALL BE "O.E." GENERAL DUTY.
  9. ALL NEW HOME RUNS SHALL GO TO EXISTING PANELS, UNLESS INDICATED OTHERWISE.
  10. THE ELECTRICAL CONTRACTOR IS RESPONSIBLE FOR RUNNING ALL WIRING TO PANELS. THE ELECTRICAL CONTRACTOR SHALL PROVIDE ALL CONDUIT AND CABLE AS SHOWN ON DRAWINGS.
  11. ALL WIRING SHALL BE DONE IN STRICT ACCORDANCE WITH N.E.C. STANDARDS AND WITH FOOD LION STANDARDS. ONLY NEAT, FIRST QUALITY WORK WILL BE ACCEPTED.
  12. ELECTRICAL CONTRACTOR IS NOT PERMITTED TO USE MC, SV CABLES, SO CORO OR ANY FLEXIBLE CONDUIT/WIRING METHODS AS A PERMANENT METHOD OF POWERING EQUIPMENT, UNLESS OTHERWISE NOTED WITHIN THE DRAWINGS. SHORT RUNS OF FLEXIBLE CONDUIT (4'-6") ARE PERMITTED FROM JUNCTION BOX TO LIGHT FIXTURES OR AS STATED IN THE FOOD LION SPECIFICATIONS 14022-PART 3.
  13. ELECTRICAL CONTRACTOR SHALL BE RESPONSIBLE FOR SUPPLYING ALL ELECTRICAL EQUIPMENT NEEDED FOR ALL NEW AND RELOCATED MECHANICAL EQUIPMENT. COORDINATE ELECTRICAL HOOK-UPS WITH MECHANICAL CONTRACTOR.
  14. ELECTRICAL CONTRACTOR SHALL BE RESPONSIBLE FOR ENSURING ALL OPEN JUNCTION BOXES, PANELS, BREAKER SPACES, RECEPTACLES AND WIRING RACKWAYS HAVE PROPER COVER PLATES INSTALLED THROUGHOUT THE STORE. REPLACE ALL MISSING, BROKEN OR OTHERWISE DEFICIENT COVER PLATES. NON WEATHERPROOF DEVICE COVERS TO BE STAINLESS STEEL. WEATHERPROOF DEVICE COVERS ARE TO BE INSTALLED IN PREP AREAS AND ON THE EXTERIOR. ALL WEATHERPROOF COVERS TO BE ALUMINUM. ALL NEW DISCONNECTS SHALL BE GENERAL ELECTRIC, GENERAL DUTY AT A MINIMUM, 3R RATED AS REQUIRED, AND NON FUSED UNLESS SPECIFIED OTHERWISE BY EQUIPMENT MANUFACTURER.
  15. ALL BRANCH CIRCUIT PANEL BOARDS, SAFETY DISCONNECTS, ELECTRICAL DISTRIBUTION EQUIPMENT, MAIN BREAKERS, AND MAIN SERVICE DISCONNECTS SHALL BE LABELED WITH PENELOPE TAGS, BLACK ON WHITE, 1.5" TALL. DISTRIBUTION SECTIONS SHALL BE LABELED ACCORDING TO ARC FLASH LABELS.
  16. THE ELECTRICAL CONTRACTOR SHALL BE RESPONSIBLE FOR THE POWER/COMMUNICATIONS FOR THE PC TRAINING ROOM AND ALL CATS CABLES NOT RELATED TO THE REGISTER, CIGARETTE KIOSK AND CUSTOMER SERVICE COUNTER. ALL RECEPTACLES ARE TO BE MOUNTED ABOVE THE COUNTER TOPS WITH WIRING SECURED AT OUTLETS.
  17. A FOOD LION ELECTRICAL CONTRACTOR (MD-CAROLINA) WILL INSTALL THE FRONT-END ELECTRICAL. THIS INCLUDES AND IS LIMITED TO ALL CHECK STANDS, CIGARETTE KIOSK, AND CUSTOMER SERVICE COUNTERS. THIS INCLUDES SETTING AND HANDLING ALL EQUIPMENT, CLEAN AND DRY POWER, ASSOCIATED CATS AND BELLON CABLES. THIS SCOPE OF WORK SHALL BE INCLUDED IN THE PERMIT AND COORDINATED WITH THE 3RD ELECTRICAL CONTRACTOR SHALL BE ON SITE THE NIGHT OF THE FRONT END CHANGE OUTS. PROVIDE & INSTALL TELEPOLES.
  18. THE ELECTRICAL CONTRACTOR SHALL BE RESPONSIBLE FOR THE POWER/COMMUNICATIONS FOR THE PC TRAINING ROOM AND ALL CATS CABLES NOT RELATED TO THE REGISTER, CIGARETTE KIOSK AND CUSTOMER SERVICE COUNTER. ALL RECEPTACLES ARE TO BE MOUNTED ABOVE THE COUNTER TOPS WITH WIRING SECURED AT OUTLETS.
  19. FREEZER DOOR SWITCHES SHALL BE PROVIDED BY REFRIGERATION CONTRACTOR. ELECTRICAL CONTRACTOR SHALL MOUNT SENSORS, PROVIDE CONDUIT AND PROVIDE 3 PAK, 22 GAUGE SHIELDED CABLE FROM FREEZER TO BACK ROOM. REFRIGERATION CONTRACTOR WILL PERFORM FINAL TERMINATION.
  20. GO TO PAINT ALL EXPOSED CONDUIT IN PRODUCE PREP AND MEAT PREP "WHITE".
  21. ALL ELECTRIC POWER, DISCONNECTS, ETC. LOCATED IN WET AREAS (MEAT PREP, PRODUCE PREP, ETC.) TO BE WATERPROOF BOXES.
  22. REMOVAL/RELOCATION OF ECO-LAB FLY TRAPS TO BE COORDINATED WITH VENDOR VA FOOD LION CONSTRUCTION MANAGER. EC TO PROVIDE POWER.

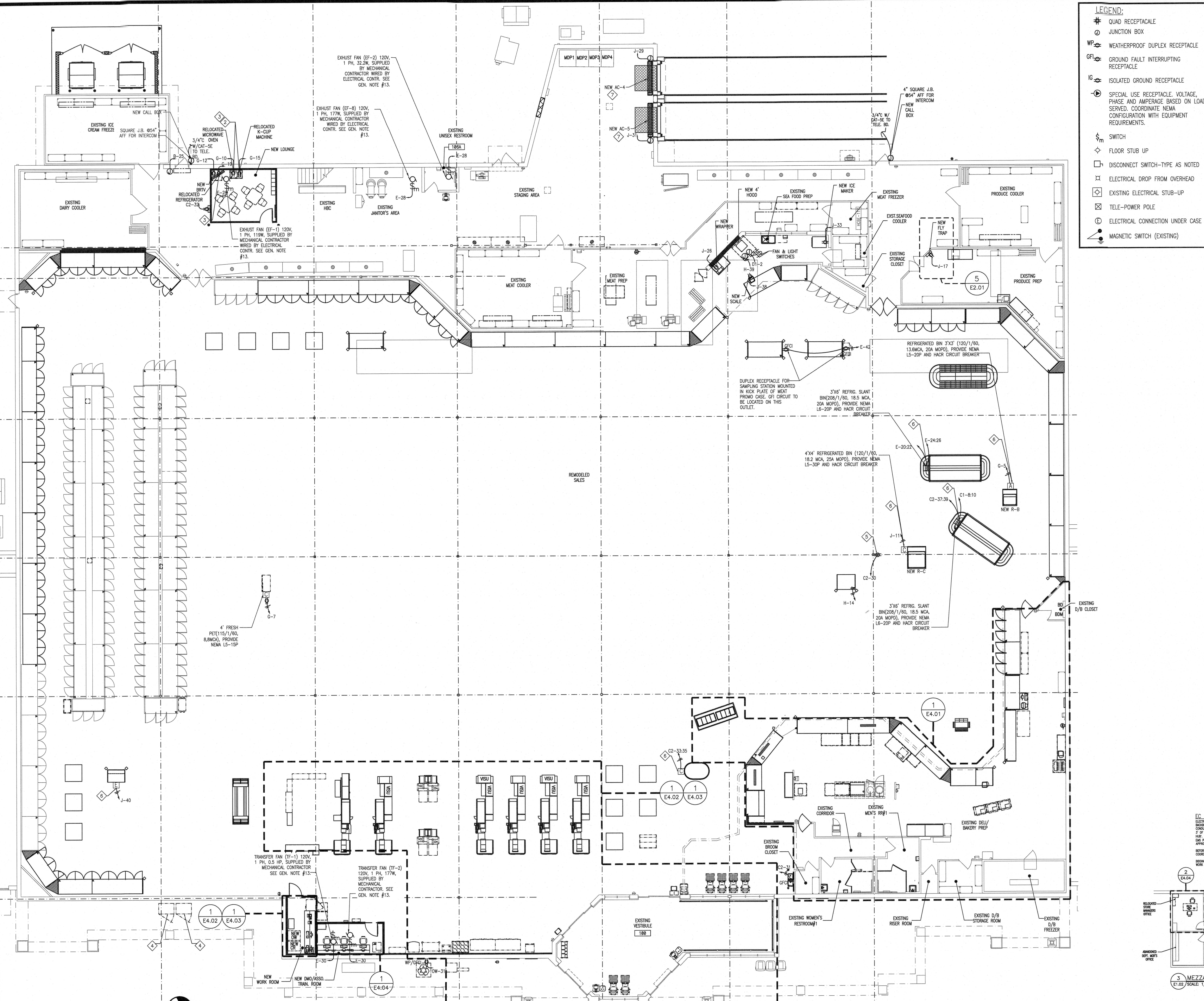
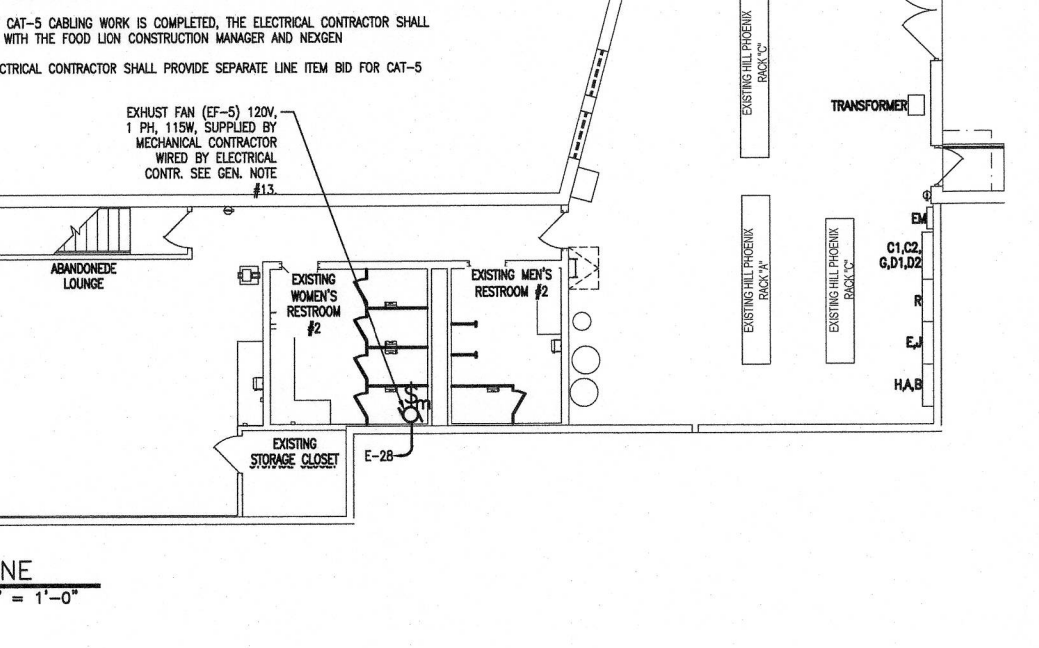
- TELEPOWER POLE INSTALLATION NOTES**
1. CONDUITS FROM "CR" & "TW" SHALL BE AS FOLLOWS:  
(A) 2" CONDUITS FROM PANEL "CR" - TWO CHECKOUTS MAXIMUM PER CONDUIT. PROVIDE ADDITIONAL CONDUITS AS REQUIRED.  
(B) 1" CONDUIT FROM PANEL "TW" DEDICATED TO DIRTY POWER FOR BELT MOTOR, SENSOR-MATIC DECONTAMINATION PADS & GENERAL RECEPTACLES.
  2. CASH REGISTER CIRCUITS SHALL BE PROVIDED WITH DEDICATED NEUTRAL AND GREEN DEDICATED CIRCUIT.
  3. EX CABLES SHALL BE INSTALLED WITH INSULATED THROATS AND APPROVED CONNECTORS.
  4. ELECTRICAL CONTRACTOR SHALL ENSURE THAT THE TELEPOLES ARE INSTALLED SECURE AND PLUMB. TOP CONNECTION OF TELEPOLE TO BAR JOIST SHALL BE CONNECTED WITH A LEGRAND/WIREMOLD SLIDING SUPPORT (#E83204 FOR 2-CHANNEL POLES, #E832043 FOR 3-CHANNEL POLES) THAT WILL ALLOW DEFLECTION OF THE BAR JOIST WITHOUT BOWING THE TELEPOLE.
  5. INSTALL ADAPTER TO REGISTER STAND TOP. A HOLE IS PROVIDED IN REGISTER STAND TOP AT THE DESIRED LOCATION. THE ADAPTER MUST BE INSTALLED SO THAT POLES GROMMETED OPENING AND POWER TOPS ARE FACING TOWARDS THE REAR OF THE TELEPOLE.
  6. TELEPOLE CUT IN THE FIELD TO BE CUT AT THE TOP ONLY AND FILED SMOOTH.
  7. NEW TELEPOLES TO BE FURNISHED & INSTALLED BY ELECTRICAL CONTRACTOR. INSTALL TELEPOLES AFTER EQUIPMENT HAS BEEN SET. TELEPOLES SHALL BE FURNISHED THROUGH LOCAL LEGRAND/WIREMOLD DISTRIBUTOR. MODEL NUMBERS REFERENCED BELOW ARE FOOD LION SPECIFIC MODEL NUMBERS ASSIGNED BY LEGRAND/WIREMOLD. DISTRIBUTOR SHALL COORDINATE MODEL NUMBERS WITH LEGRAND/WIREMOLD. MODEL NUMBERS INCLUDE: POLE ADAPTER, TOW PLATE, (2) TEE CLAMPS, 2 1/2" CLEAR ANODIZED ALUMINUM POLES UNLESS NOTED OTHERWISE. MOUNT WITH LARGER DIMENSION OF THE TELEPOLE RUNNING BACK TO FRONT.
  8. ELECTRICAL CONTRACTOR SHALL BE RESPONSIBLE FOR TELEPOLES FROM CHECKSTAND TO BOTTOM OF BAR JOISTS.
  9. COORDINATE EXACT TELEPOLE LOCATION WITH FOOD LION CONSTRUCTION MANAGER DURING TIME OF STORE SET.
  10. REAR SECTION OF TELEPOLE IS FOR POWER, FRONT SECTION IS FOR COMMUNICATIONS.
  11. IF EXTENSION IS NEEDED, USE #AMP322 (2 CHANNEL POLES) OR #AMP348 (3 CHANNEL POLES).
  12. 3-CHANNEL TELEPOLES AT CHECK STANDS (TYPE DR AND DL) SHALL INCLUDE LIGHT BRACKET #E83920.
  13. EXISTING TELEPOLES TO BE PAINTED SILVER BY GC.

- MODEL #S**
- [A] FLAMP055  
• SPL AMTP-412 12FT 2-CHANNEL POLE WITH SLIDING SUPPORT #E83204 AND (1) L5-20R 3x3 & 4x4 SLANT BINS
  - [B] FLAMP056  
• SPL AMTP-412 12FT 2-CHANNEL POLE WITH SLIDING SUPPORT #E83204 AND (1) L6-20R 3x6 BIN, 3x6 BIN, 5x6 BERRY QUAD
  - [C] FLAMP057  
• SPL AMTC-412 12FT 2-CHANNEL POLE (BLANK) WITH SLIDING SUPPORT #E83204, GROMMET AND STANDARD GRAY BOOT  
• CUSTOMER SERVICE COUNTER, WING BAR (OR WHEN ONE-OFF RECEPTACLE OR NO RECEPTACLE REQUIRED)
  - [D] FLAMP057S (LEFT HAND)  
• SPL ALUMINUM 3-CHANNEL POLE WITH SLIDING SUPPORT #E83204-3 AND LANE LIGHT MOUNTING BRACKET #E83920 (2-1/4"x3-5/16")  
• CHECKSTANDS, CUSTOMER SERVICE CHECKSTAND #1
  - [E] FLAMP057S (RIGHT HAND)  
• SPL ALUMINUM 3-CHANNEL POLE WITH SLIDING SUPPORT #E83204-3 AND LANE LIGHT MOUNTING BRACKET #E83920 (2-1/4"x3-5/16")  
• CHECKSTANDS, CUSTOMER SERVICE CHECKSTAND #1
  - [F] FLAMP058  
• SPL AMTP-412 12FT 2-CHANNEL POLE WITH SLIDING SUPPORT #E83204 AND (1) NEMA 5-30R & STANDARD GRAY BOOT  
• SELF-CONTAINED WINE CASE

- POWER PLAN KEY NOTES**
1. SURFACE MOUNTED HAND DRIVERS TO BE POWERED FROM DEDICATED CIRCUIT.
  2. COORDINATE GFCI RECEPTACLE HEIGHT WITH COUNTER TOP HEIGHT (46" AFF). COORDINATE EXACT HEIGHT WITH FOOD LION CONSTRUCTION MANAGER.
  3. RELOCATED EQUIPMENT CIRCUIT TO NEW LOCATION, EXTEND CIRCUITRY AS REQUIRED.
  4. THE ELECTRICAL CONTRACTOR SHALL FIELD VERIFY THAT ALL ELECTRICAL CONNECTIONS ARE CAPPED OFF WITHIN 5' OF THE FINAL LOCATION OF THE RELOCATED PROPANE EXCHANGES. ELECTRICAL CONTRACTOR SHALL REMOVE ALL WIRING AND CAP OFF CONDUITS.
  5. DUPLEX RECEPTACLE MOUNTED 18" AFF (CONFORMANCE: OUTLET).
  6. REFER TO TELE-POWER POLE INSTALLATION NOTES ON THIS SHEET.
  7. THE MECHANICAL CONTRACTOR SHALL SUPPLY THE AIR CURTAINS, AIR CURTAIN MOUNTING BRACKETS AND MICRO-SWITCHES. THE ELECTRICAL CONTRACTOR SHALL INSTALL AND WIRE THE MICRO-SWITCH FOR AIR CURTAIN CONTROL.

- ELECTRICAL DEPENDENCIES TO BE REPAIRED:**
1. MEAT PREP/REPLACE DAMAGED MALE / FEMALE PLUG AND BOOTS.

**EC NOTE:**  
ELECTRICAL CONTRACTOR IS TO PULL (8) 04-0 CABLES FROM THE TELEPHONE BACKROOM OVER TO THE MAIN PANEL. THE ELECTRICAL CONTRACTOR IS TO USE CONDUIT, SIZE TO BE DETERMINED BY THE ELECTRICAL CONTRACTOR. IS TO LEAVE A 2' OF COIL OF CABLE AT THE TELEPHONE ROOM AND LABEL. TRACKING COMMUNICATION HUB. IS TO PULL CABLES INTO THE MAIN PANEL AND LEAVE A 2' COIL OF CABLE IN THE MAIN PANEL. LABEL TRACKING COMMUNICATIONS. HUB. SECOND AND THIRD HUB. WIRE BEFORE ANY CABLE-CARRYING WORK IS COMPLETED. THE ELECTRICAL CONTRACTOR SHALL COORDINATE WITH THE FOOD LION CONSTRUCTION MANAGER AND REPAIRS. BRING ELECTRICAL CONTRACTOR SHALL REMOVE SERVICE LINE ITEM 810 FOR 04-0 WORK.



1 ELECTRICAL POWER PLAN  
E1.02 SCALE: 3/32" = 1'-0"

