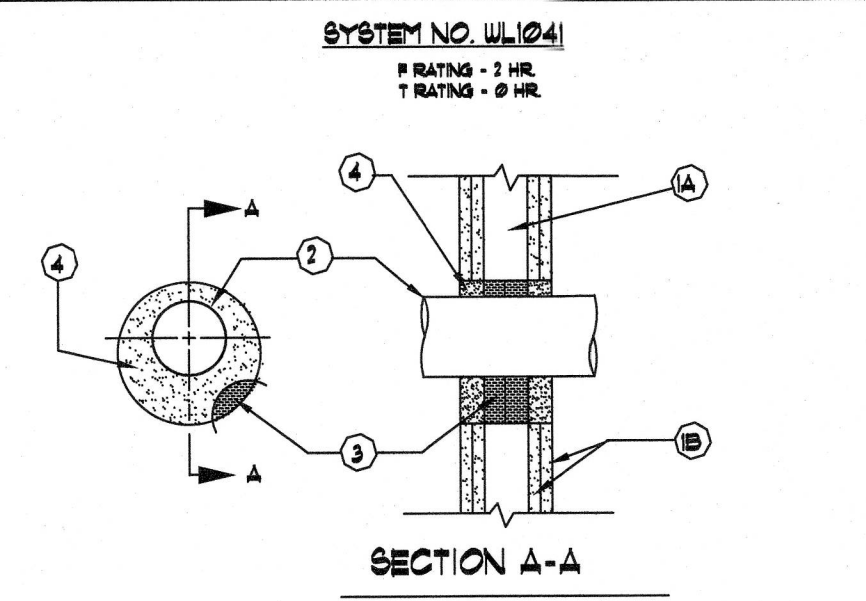


- 1. FLOOR OR WALL ASSEMBLY** - Light weight or normal weight (100-500 pcf) concrete. Except as noted in table under item 4, min thickness of solid concrete floor or wall assembly is 4-1/2 in. Floor may also be constructed of any min 8 in thick UL Classified hollow core PRECAST CONCRETE UNIT. When floor is constructed of hollow core precast concrete units, packing material (item 3) and caulk fill material (item 4) to be installed symmetrically on both sides of floor, flush with floor surface. Wall assembly may also be constructed of any UL Classified CONCRETE BLOCKS. Max diam of opening in a solid lightweight or normal weight concrete floor is 32 in. Max diam of opening in floor constructed of hollow-core precast concrete units is 16 in.
- 2. THROUGH PENETRANTS** - One metallic pipe, conduit or tubing to be installed concentrically or eccentrically within the firestop system. The annular space shall be min 1/4 in to max 1/2 in, larger than the opening and centered on both sides of floor or wall assembly. The following types and sizes of metallic pipes, conduits or tubing may be used:
- A. STEEL PIPE - Non 3/4 in diam (or smaller) Schedule 40 (or heavier) steel pipe.
 - B. RIGID PIPE - Non 3/4 in diam (or smaller) cast or ductile iron pipe.
 - C. CONDUIT - Non 3/4 in diam (or smaller) rigid steel conduit.
 - D. CONDUIT - Non 3/4 in diam (or smaller) electrical metallic tubing.
 - E. COPPER TUBING - Non 3/4 in diam (or smaller) Type M (or heavier) copper tubing.
 - F. COPPER PIPE - Non 3/4 in diam (or smaller) Regular (or heavier) copper pipe.
- 3. PACKING MATERIAL** - Polyurethane based rod or non 1 in thickness of tightly-packed mineral wool batts or glass fiber insulation firmly packed into opening as a permanent form. Packing material to be recessed from top surface of floor or from both surfaces of wall as required to accommodate the required thickness of caulk fill material (item 4).
- 4. FILL, VOID OR CAVITY MATERIAL - CAULK** - Applied to fill the annular space flush with top surface of floor or wall assembly. Min 1 in thickness of caulk to be installed symmetrically on both sides of floor, flush with wall surface. As point contact location between penetrant and sleeve or between penetrant and concrete, a min 1/4 in diam bead of caulk shall be applied at the top surface of floor and at both surfaces of wall. The hourly R Rating and the min required caulk thickness are dependent upon a number of parameters, as shown in the following table:

Floor or Wall Thickness, in	Non Pipe Tube or Conduit Dia, in	Max Annular Space, in	Min Caulk Thick, in	R Rating, hr
2-1/2	1/2-2	1-3/8	1/2	2
3-1/2	1/2-2	2-1/4	1	2
4-1/2	1/2-2	1-3/8	1/4 (2)	2
4-1/2	1/2-2	1-1/4	1/2	2
4-1/2	1/2-2	2	1	3
4-1/2	1/2-2	2-1/4	1	3
4-1/2	1/2-2	2-1/4	1	3
4-1/2	1/2-2	1-3/8	1/2	4
4-1/2	1/2-2	1-3/8	1/2	4

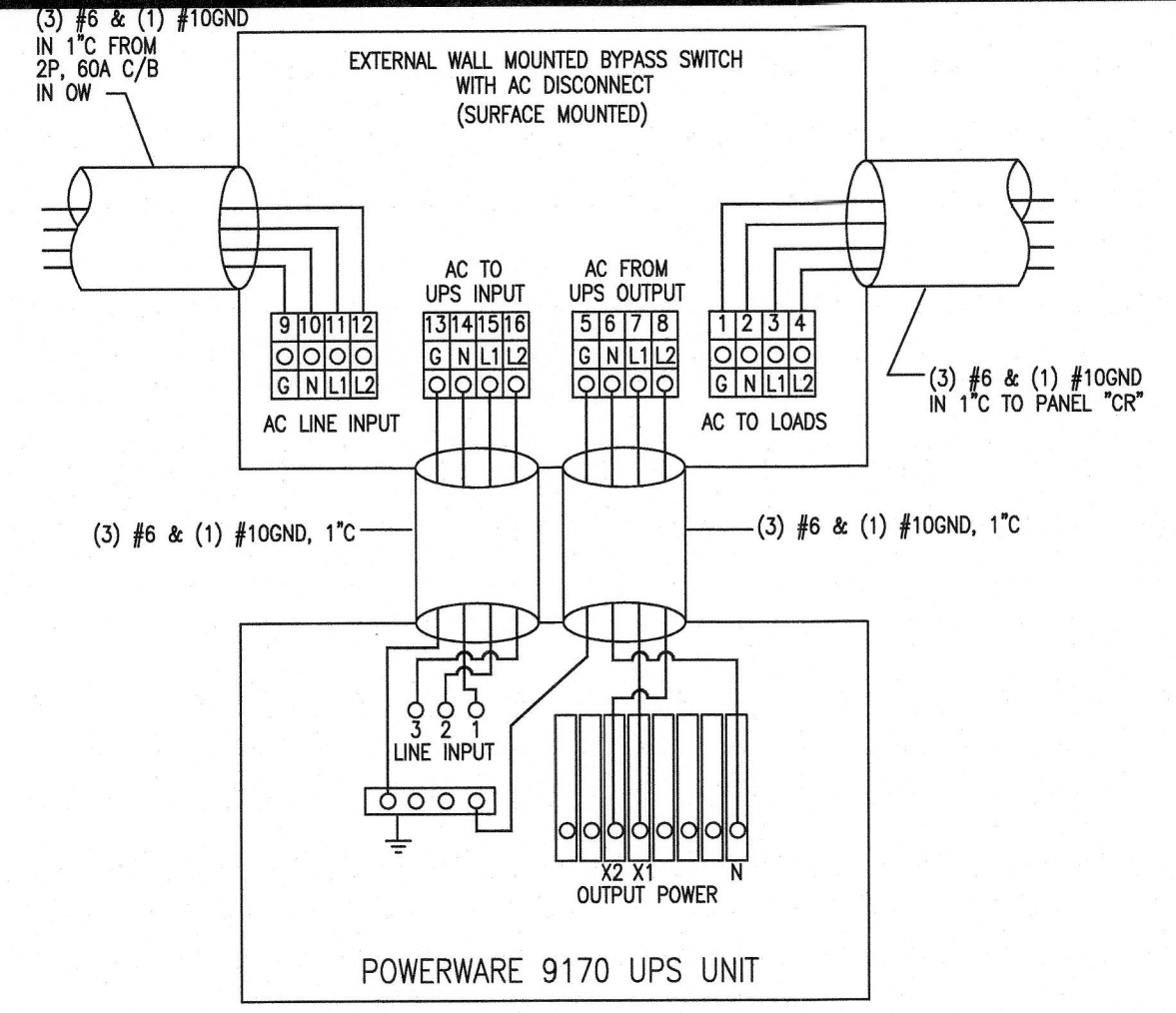
(A) Min 7 in thickness of material wool batts insulation required in annular space.
 (B) Min 1 in thickness of material wool batts insulation required in annular space on both sides of floor or wall assembly. Min 1 in thickness of caulk to be installed flush with each surface of floor or wall assembly.
 *Bearing the UL Classification Marking

FLOOR OR WALL ASSEMBLY
1-2-3 HR UL PENETRATION (STEEL CONDUIT)



- 1. Wall Assembly** - The fire-rated gypsum wallboard/stud wall assembly shall be constructed of the materials and in the manner specified in the individual U200 or U400 Series Wall and Partition Designs in the UL Fire Resistance Directory and shall include the following construction features:
- A. Studs - Wall framing may consist of either wood studs or steel channel studs. Wood studs to consist of 2 by 4 in lumber spaced max 16 in OC. Steel studs to be 8 min 7-1/2 in wide and spaced 24 in OC.
 - B. Wallboard, Gypsum - Two layers of non 5/8 in thick gypsum wallboard, as specified in the individual Wall and Partition Designs. Max diam of opening not to exceed 1 in.
- 2. Through Penetrants** - One metallic pipe or conduit to be installed concentrically or eccentrically within the firestop system. The annular space shall be min 1/4 in to max 1/2 in, larger than the opening and centered on both sides of floor or wall assembly. The following types and sizes of metallic pipes, conduits or tubing may be used:
- A. Steel Pipe - Non 4 in diam (or smaller) Schedule 40 (or heavier) steel pipe.
 - B. Conduit - Non 4 in diam (or smaller) electrical metallic tubing or steel conduit.
 - C. Copper Tubing - Non 3 in diam (or smaller) Type M (or heavier) copper tubing.
- 3. Packing Material** - Min 3-1/2 in thickness of min 20 pcf fiberglass insulation firmly packed into opening as a permanent form. The packing material shall be sized to be at least 1/2 in larger than the opening and centered in the annular space and compressed so that it is recessed a min of 1/4 in from each surface of wall.
- 4. FILL, VOID OR CAVITY MATERIAL** - Dry mix material mixed with water at a rate of 100 grams of dry mix per 40 to 50 ml of water or a 40/100 to 50/100 ratio by weight of water to dry mix. It accordance with the accompanying installation instructions. Material applied to each surface of the packing material within the annular space between the penetrant and periphery of opening to a min depth of 1-1/4 in. Material shall be troweled flush with both surfaces of wall assembly.
- Solid Bond Building Products, National Gypsum Div., Type S&A-Booster PB.
 ** Bearing the UL Classification Marking.

UL PENETRATING PROCEDURE DETAILS
NOT TO SCALE



- UPS UNIT NOTES:**
- THIS DIAGRAM MUST BE FOLLOWED PER PROPER PHASING AND OPERATION.
 - PANEL 'CR' TO BE POWERED BY 208 VAC HOT, NEUTRAL AND ISOLATED GROUND.
 - ALL ELECTRICAL WIRING WILL BE DONE IN A MANNER ACCEPTABLE TO FOOD LION AMERICA AND THE N.E.C.
 - FOR ANY QUESTIONS, CALL NATIONAL POWER CORPORATION AT (336) 613-3679.
 - NATIONAL POWER IS RESPONSIBLE FOR STARTING UP THE U.P.S. SYSTEM.
 - 6"x5"x4" JUNCTION BOX SHALL BE FLUSH MOUNTED DIRECTLY BEHIND THE BYPASS SWITCH FOR CONCEALED WIRING.

"UPS" UNIT WIRING DIAGRAM
E6.02 NOT TO SCALE

LIGHT FIXTURE SCHEDULE

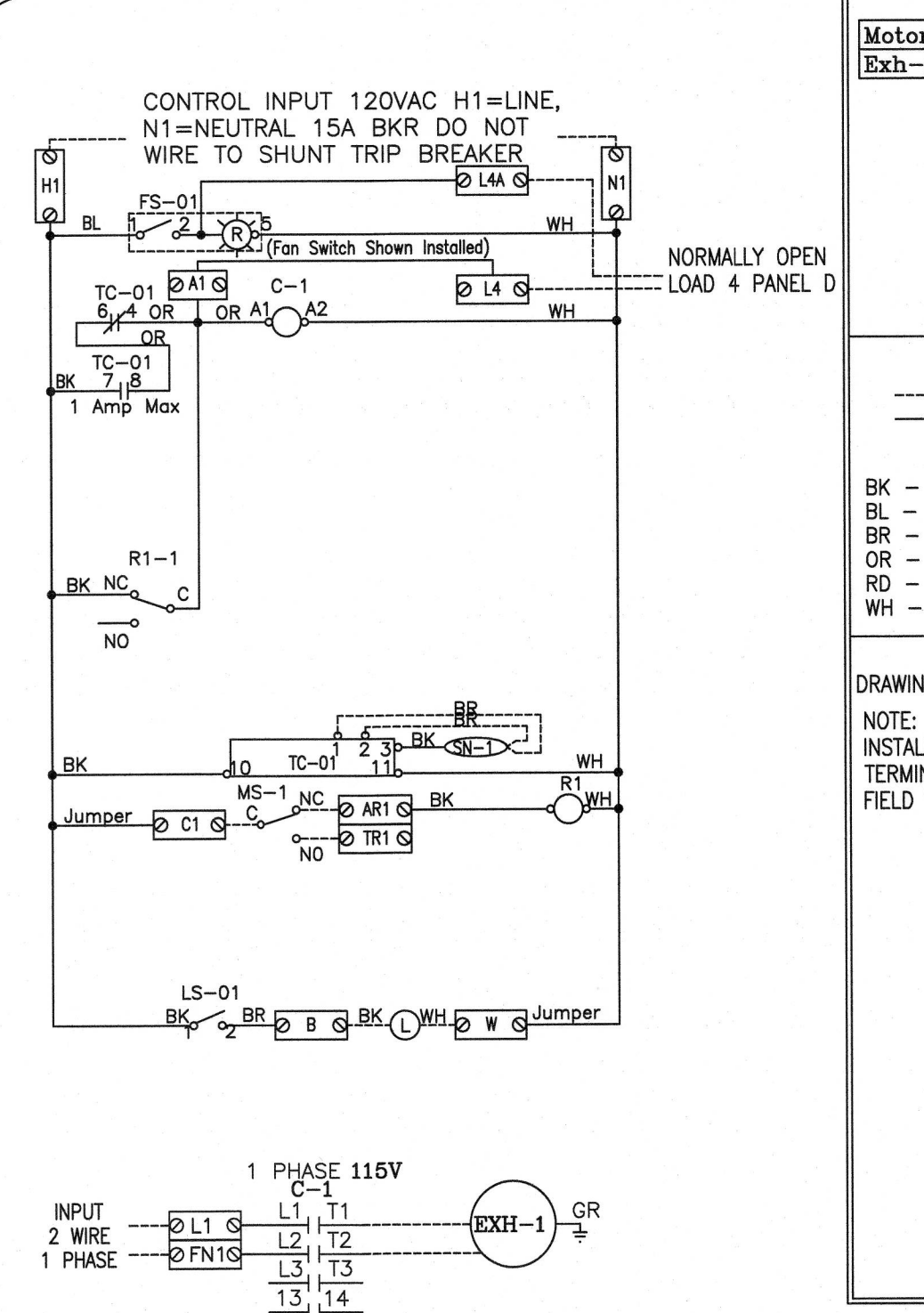
FIXTURE TYPE	DESCRIPTION	MANUFACTURER	LABEL	WATTS	VOLTS	NOTE	LOCATION
XC	EGRESS LIGHT	LITHONIA	AFN DB EXT	0.05	MVOLT		EXTERIOR EGRESS EMERGENCY LIGHT
XB	2X4 LED TROFFER (SUSPENDED)	POWER CONCEPTS	P-HT2F4119L06A301	120	MVOLT		DELI/BAKERY SALES LIGHTS FOR STORES WITH AN OPEN STRUCTURE CEILING
LM	2X4 LED TROFFER (LAY-IN)	POWER CONCEPTS	P-OT204050GH6A301	50	MVOLT		TO BE USED INSIDE DELI/BAKERY PREP. OVER PRODUCE BUSSTRUT TRELLIS, IN ROUND MEAT BULKHEAD.
E1	EMERGENCY LIGHT, 2 HEAD	MULE	MROR-6-12-W-LED	54	MVOLT		TO BE USED WHEN EXISTING FIXTURES ARE OFF-WHITE AND STORE IS GETTING ALL NEW FINISHES (COOL COLOR SCHEME)
QZAS	2LB' WITH ASYMMETRIC REFLECTOR, SUSPENDED	LITHONIA	TZ 1 32 MVOLT OS10IS ZBASR48	52	120	6	SUSPENDED QZA (DOWNLIGHTING); DEPARTMENT SIGNAGE ILLUMINATION
QZAG	2LB' WITH ASYMMETRIC REFLECTOR, GRID	LITHONIA	TZ 1 32 MVOLT OS10IS ZBASR48, ZSPRG	52	120	-	GRID QZA (DOWNLIGHTING); DEPARTMENT SIGNAGE ILLUMINATION
QZAS1	11L4' WITH ASYMMETRIC REFLECTOR, SUSPENDED	LITHONIA	Z 1 32 MVOLT OS10IS ZBASR48, ZACVH	27	120	-	4' VERSION OF QZAS
IBG	HIGH BAY	LITHONIA	IBG-18L-HET-AFL-GN D-MVOLT-GZ10-35K-6-DCR	100 WATT	120		PENDANT-MOUNTED IN MEAT & DELI (PIPE BY INSTALLER)

LIGHT FIXTURES SHALL BE MANUFACTURED BY LITHONIA UNLESS NOTED OTHERWISE. PURCHASE FROM SYLVANIA AT THE NATIONAL CONTRACT PRICE. FOR PURCHASE, CONTACT SYLVANIA AT 1-800-573-1514 EXT. 0366. THE ELECTRICAL CONTRACTOR SHALL BE RESPONSIBLE FOR VERIFYING ALL QUANTITIES, RATINGS, LENGTHS, ETC. ANY DISCREPANCIES SHALL BE RESOLVED WITH SYLVANIA PRIOR TO BID. CONTRACTOR SHALL BE RESPONSIBLE FOR ANY ADDITION TO THE BILL OF MATERIALS DUE TO LOCAL STATE GOVERNMENTAL CODES.

LIGHT FIXTURE SCHEDULE NOTES

- ALL LIGHT FIXTURES (FLUORESCENT AND LED) AND LAMPS SHALL BE PURCHASED FROM SYLVANIA LIGHTING SERVICES CORP. LIGHTING DESIGN AND PROJECT MANAGEMENT DEPARTMENT, 200 MIDWAY PARK DRIVE, MIDDLETON, NY 10940 AT THE NATIONAL CONTRACT PRICE. FOR PURCHASE, CONTACT LISA B. MASTIN AT 1-800-573-1514 EXT. 0066 EMAIL: LisaB.Mastin@serm.com. ALL FIXTURES SHALL BE INSTALLED AND POWERED BY THE ELECTRICAL CONTRACTOR. THE ELECTRICAL CONTRACTOR SHALL BE RESPONSIBLE FOR VERIFYING ALL QUANTITIES, RATINGS, LENGTHS, ETC.
- SEE SHEET E1.01 FOR MOUNTING HEIGHTS OF ALL LIGHTING FIXTURES. COORDINATE CABLE MOUNTING LENGTH WITH MOUNTING HEIGHT OF FIXTURE.
- INSTALL SRECP CLIPS ON BOTH SIDES OF EACH ROW OF FIXTURES. PROVIDE BLACK MC POWER FEED. TIE WRAP MC CORD NEATLY TO AIRCRAFT CABLE.
- FIXTURE TO BE MOUNTED ON TOP OF REFRIGERATED CASE. MOUNT FIXTURE 24" FROM CENTER OF FIXTURE TO FACE OF WALL. POSITION REFLECTOR TO FACE THE WALL.
- ALL LAMPS SHALL BE MANUFACTURED BY GENERAL ELECTRIC, SYLVANIA OR PHILLIPS, UNLESS NOTED OTHERWISE.
- SUSPEND QZAS FIXTURES WITH AIRCRAFT CABLE. PROVIDE WHITE MC CABLE POWER FEED. TIE WRAP MC CABLE NEATLY TO AIRCRAFT CABLE.
- PROVIDE TUBE SHIELDS FOR ALL LAMPS IN THE PRODUCE PREP AND SALES AND ALL FIXTURES IDENTIFIED WITH 'TS'.
- MOUNTED TO BACK OF BULKHEAD

HOOD SYSTEM WIRING DETAIL



NOTE 1: CT SENSOR FIELD WIRED WHEN RISERS SHIPPED LOOSE. WHEN MULTIPLE CT SENSORS USED ON ONE FAN SWITCH, EACH SENSOR IS WIRED TO ITS OWN CONTROLLER AND THE CONTROLLER TERMINALS 4, 7, 10 AND 11 ARE WIRED IN PARALLEL. TERMINALS 6 AND 8 ARE JUMPERED ON EACH CONTROLLER.

Motor	Type	PH	Volt	HP	FLA	BREAKER
Exh-1	Exh	1	115	0.333	6	15 Amp

1 Phase Controls for 1 Exhaust fan. Includes 1 Light switch, 1 Fan switch, Exhaust in Fire, NC contact from EMS Panel for override of fan control, Double Dual Microswitch (extra) used for shutdowns. Fans ON/OFF thermostatically controlled.

COMPONENT PARTS LIST

LABEL DESCRIPTION	LOCATION
C-x Contactor	
ST-x Starter	
OL-x Overload	
FS-x Fan Switch (Lighted)	
LS-xx Light Switch	
Hood Light(s)	
MS-x MicroSwitch (Analog/PyroChem)	
Rx Relay DPDT - 34,110.0146.0	

TC-XX TEMPERATURE CONTROLLER PXR4-WAS1-GVD47
 ISN-X RTD TEMPERATURE SENSOR (See Note 1)

WIRE COLOR

BK - BLACK YW - YELLOW
 BL - BLUE GR - GRAY
 BR - BROWN PR - PURPLE
 OR - ORANGE OR/BL - ORANGE/BLUE (STRIPE)
 RD - RED BL/RD - BLUE/RED (STRIPE)
 WH - WHITE RD/GN - RED/GREEN (STRIPE)

SPARE FIRE DRY CONTACTS

TERMINAL FOR FIELD WIRING TO BUILDING FIRE PANEL, DRY CONTACTS FOR SIGNAL ONLY

TERMINAL FOR FIELD WIRING TO MUA-1 O/A DAMPER, DRY CONTACTS FOR SIGNAL ONLY

TERMINAL FOR FIELD WIRING TO (spare) SHUTDOWN, DRY CONTACTS FOR SIGNAL ONLY

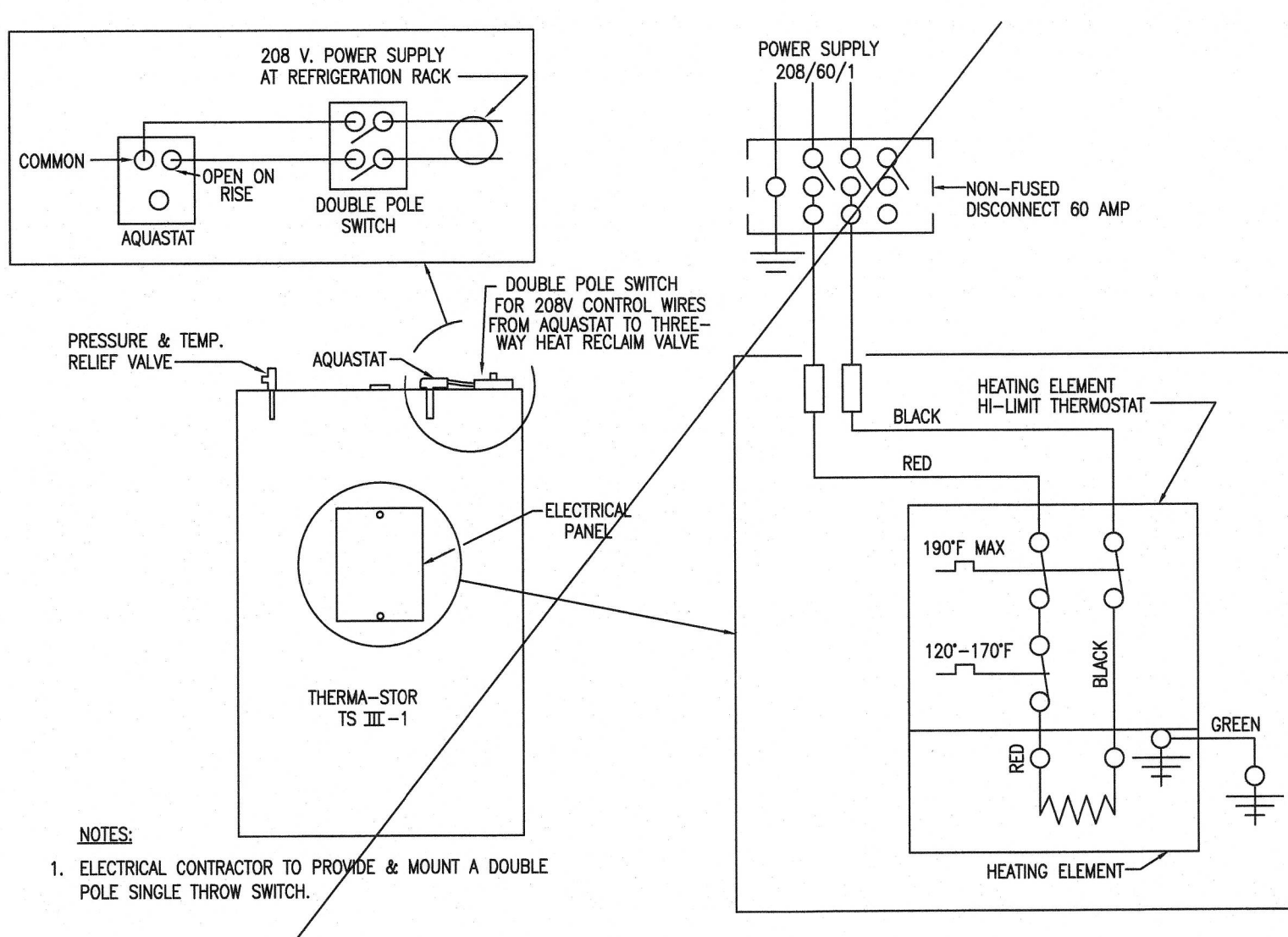
Rx RELAY SOCKET STYLE "DOLBY"

C-RD	NO	1	1
NO-BL	NC	1	1
NO-BL	COM	1	1
NC-PR	COM	1	1

MS-x MicroSwitch

C-30
 NC-36
 NC-38

2 x 18 x 6 Box



3. WIRING DETAIL FOR THERMA-STOR III-1 RECLAIM WATER HEATER
E6.02 NOT TO SCALE

NOTES:
 1. ELECTRICAL CONTRACTOR TO PROVIDE & MOUNT A DOUBLE POLE SINGLE THROW SWITCH.

ARCHITECTS SEAL:

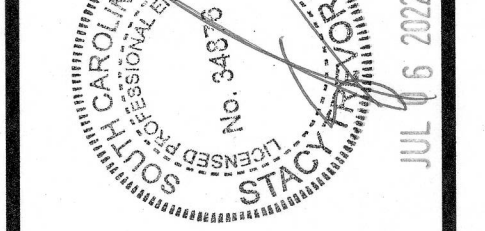
CORPORATE SEAL:



ENGINEER'S SEAL:



NO. 1045
 JUL 6 2022



REVISIONS
 NO DATE REMARKS

FOOD LION
 2110 Executive Drive, Salisbury, NC 28147
 Telephone: 704.633.9250
 Food Lion is an AMULU DELHAUZE company.

FOOD LION REMODEL STORE #2839
 860 PARRIS ISLAND GTWY
 BEAUFORT, SC 29906

PROJECT NO: 2021.1218
 DATE: 7/5/22

52 OF 54
E6.02
 ELECTRICAL SCHEDULES
 AND DIAGRAMS

CHECKED: SN DRAWN: MM