

**DEMOLITION NOTES**

- MECHANICAL CONTRACTOR SHALL VERIFY EXISTING CONDITIONS PRIOR TO COMMENCING WITH DEMOLITION WORK. DIFFUSERS, GRILLES, DAMPERS, DUCT HEATERS, FANS, ETC. SHALL BE SALVAGED AS INDICATED ON PLAN FROM AREAS SCHEDULED FOR DEMOLITION.
- SALVAGED EQUIPMENT MAY BE RE-USED OR RELOCATED WHEN INDICATED PER SHEET M1.01. UNUSED ITEMS SHALL BE RETURNED TO Food Lion SHARED SERVICES GROUP, LLC.
- ALL EXISTING MECHANICAL EQUIPMENT SHALL REMAIN UNLESS NOTED OTHERWISE.
- MECHANICAL CONTRACTOR WILL BE RESPONSIBLE FOR REMOVING ALL OLD SMOKE DETECTORS. ONCE SYSTEM HAS BEEN SWITCHED OVER TO FIRE ALARM CONTACT, MECHANICAL CONTRACTOR WILL NOTIFY GENERAL CONTRACTOR IN WRITING. MECHANICAL CONTRACTOR WILL THEN REMOVE OLD DETECTORS. WIRING FROM DETECTORS IS TO BE REMOVED TO ASSOCIATED JUNCTION BOXES AND CAPPED OFF WITH WIRE NUTS. WIRING FROM ECP TERMINALS IS TO BE REMOVED TO TROUGH AND CAPPED OFF WITH WIRE NUTS.

**SYMBOL LEGEND**

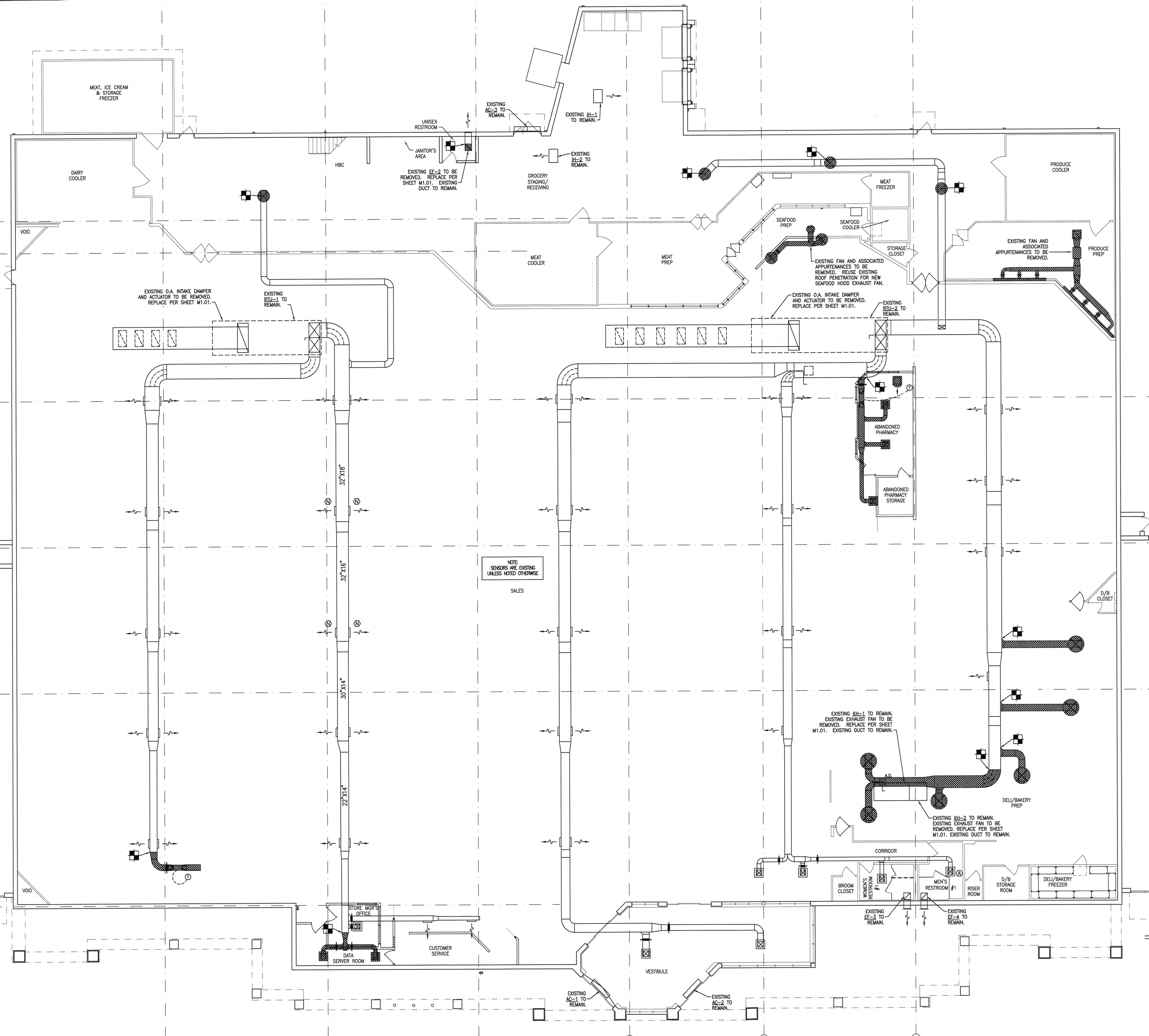
- EXISTING DUCTWORK TO REMAIN - SIZE AS INDICATED. FIRST DIMENSION IS FACE OF DUCT SHOWN ON PLAN.
- EXISTING DUCTWORK TO BE REMOVED.
- MOTOR OPERATED DAMPER
- MANUAL VOLUME DAMPER
- LIMIT OF REMOVED AND/OR ABANDONED DUCTWORK

**SENSOR LEGEND**

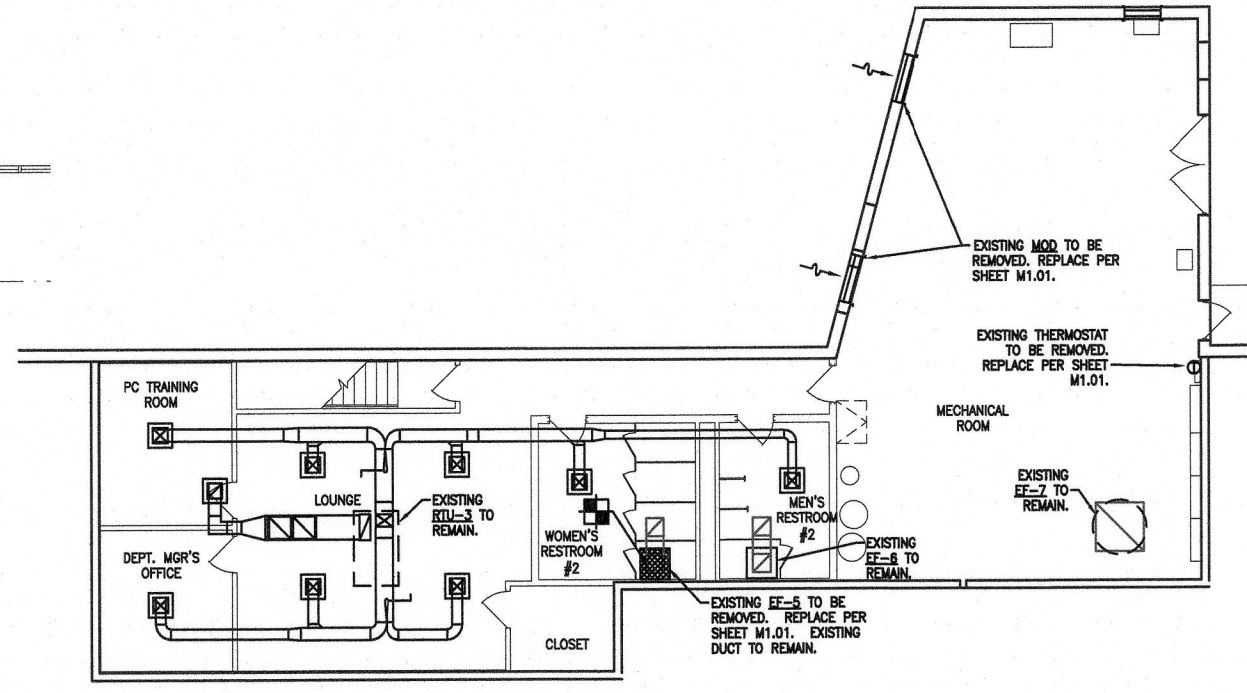
- SMOKE DETECTOR
- RELATIVE HUMIDITY
- TEMPERATURE
- AIR PRESSURE SWITCH
- THERMOSTAT
- DISCHARGE AIR SENSOR

**ABBREVIATIONS**

- AHU AIR HANDLING UNIT
- A.F.F. ABOVE FINISHED FLOOR
- O.A. OUTSIDE AIR
- S.A. SUPPLY AIR
- R.A. RETURN AIR
- RTU ROOFTOP UNIT (AIR CONDITIONING)



NOTE:  
SENSORS ARE EXISTING  
UNLESS NOTED OTHERWISE



1 MECHANICAL DEMOLITION PLAN  
M0.01 SCALE: 3/32" = 1'-0"



1 MEZZANINE  
M0.01 SCALE: 1/16" = 1'-0"



REVISIONS

NO.	DATE	REMARKS

**FOOD LION**  
2110 Executive Drive, Salisbury, NC 28147  
Telephone: 704.633.0520  
Food Lion is an AHOLD DELHAIZE company.

**FOOD LION**  
REMODEL  
STORE #2839  
860 PARRIS ISLAND GTWY  
BEAUFORT, SC 29906

PROJECT NO: 2021.1218  
DATE: 7/5/22

36 OF 54  
**M0.01**  
MECHANICAL DEMOLITION  
PLAN  
CHECKED: QN DRAWN: AE