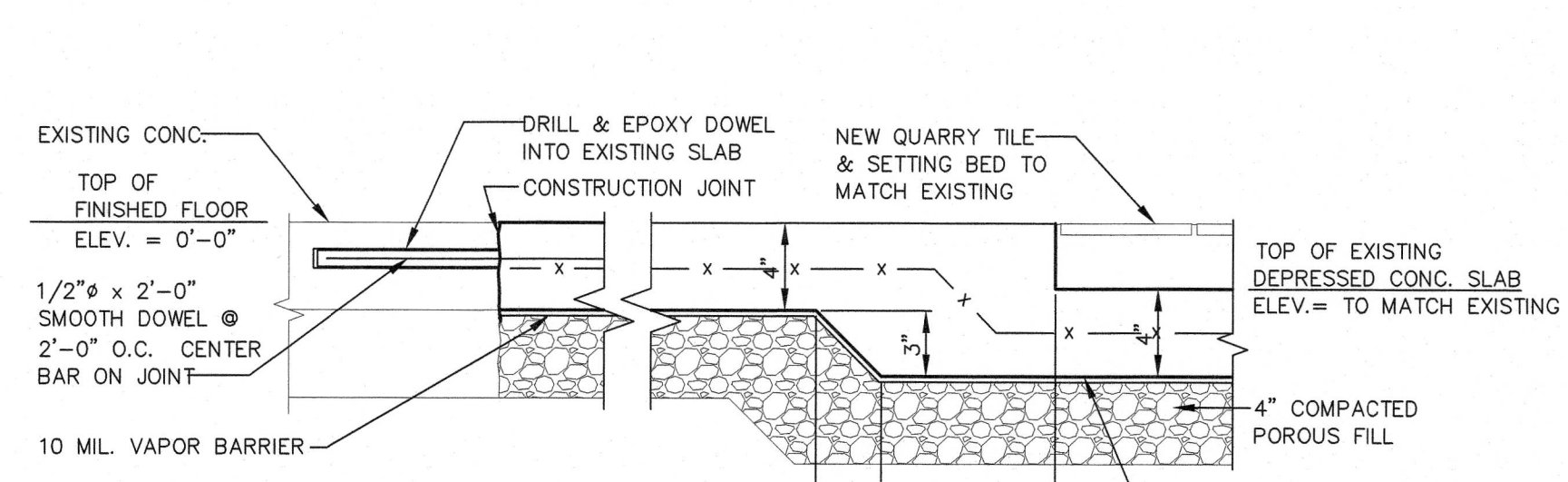


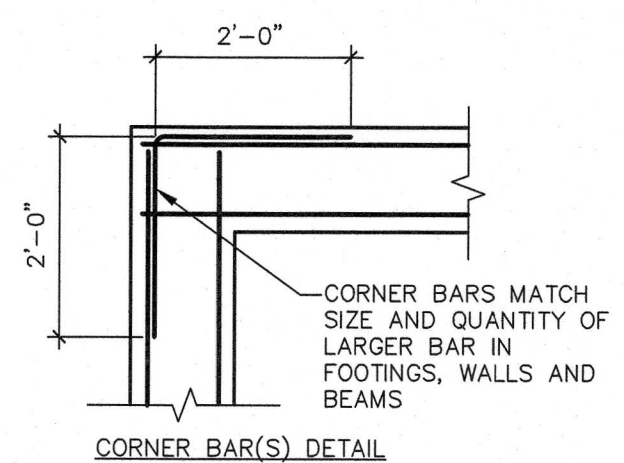
**SLAB JOINT DETAIL**

**DETAIL 1**  
1-1/2" = 1'-0"

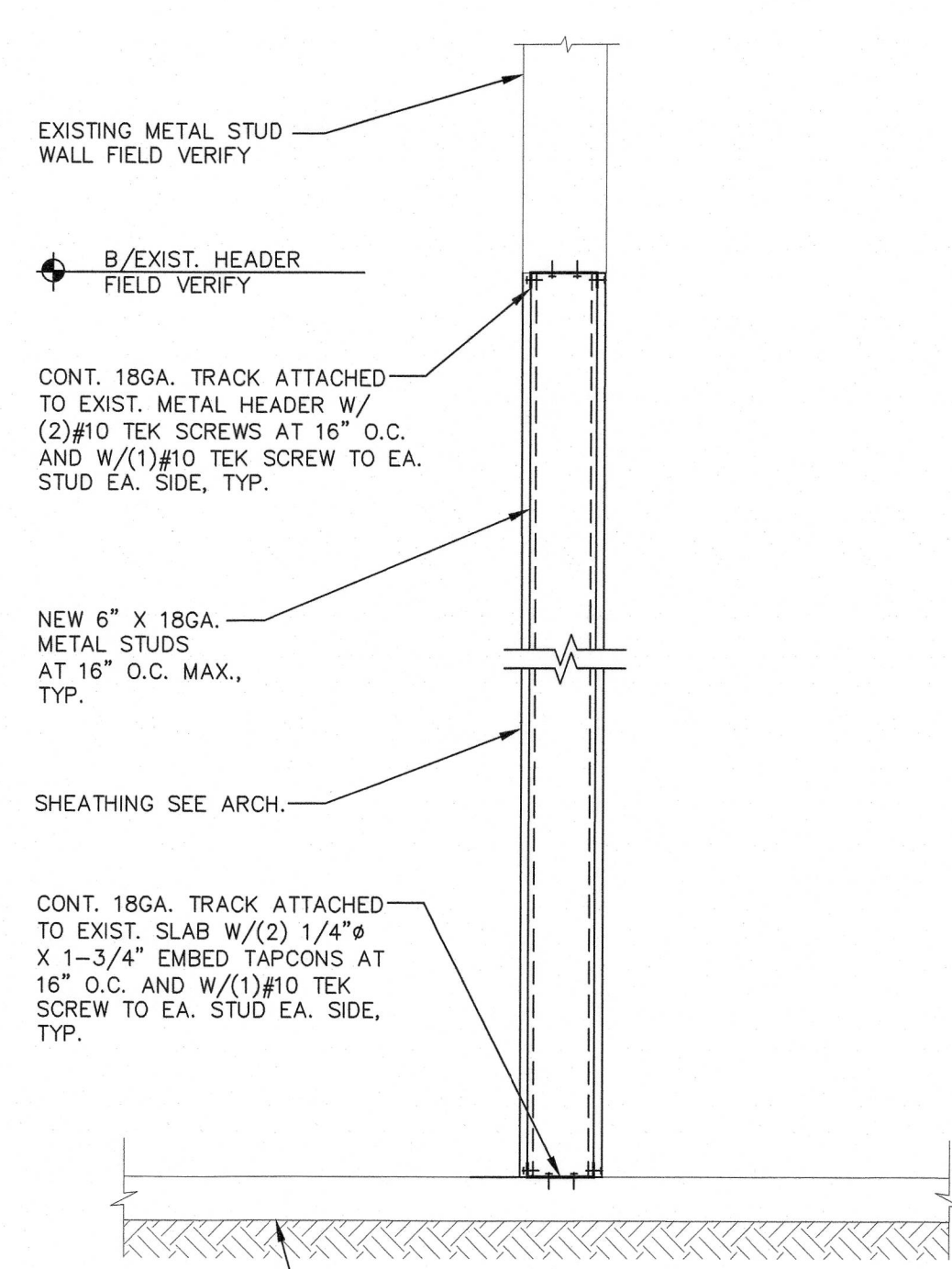


**DEPRESSED SLAB JOINT DETAIL**

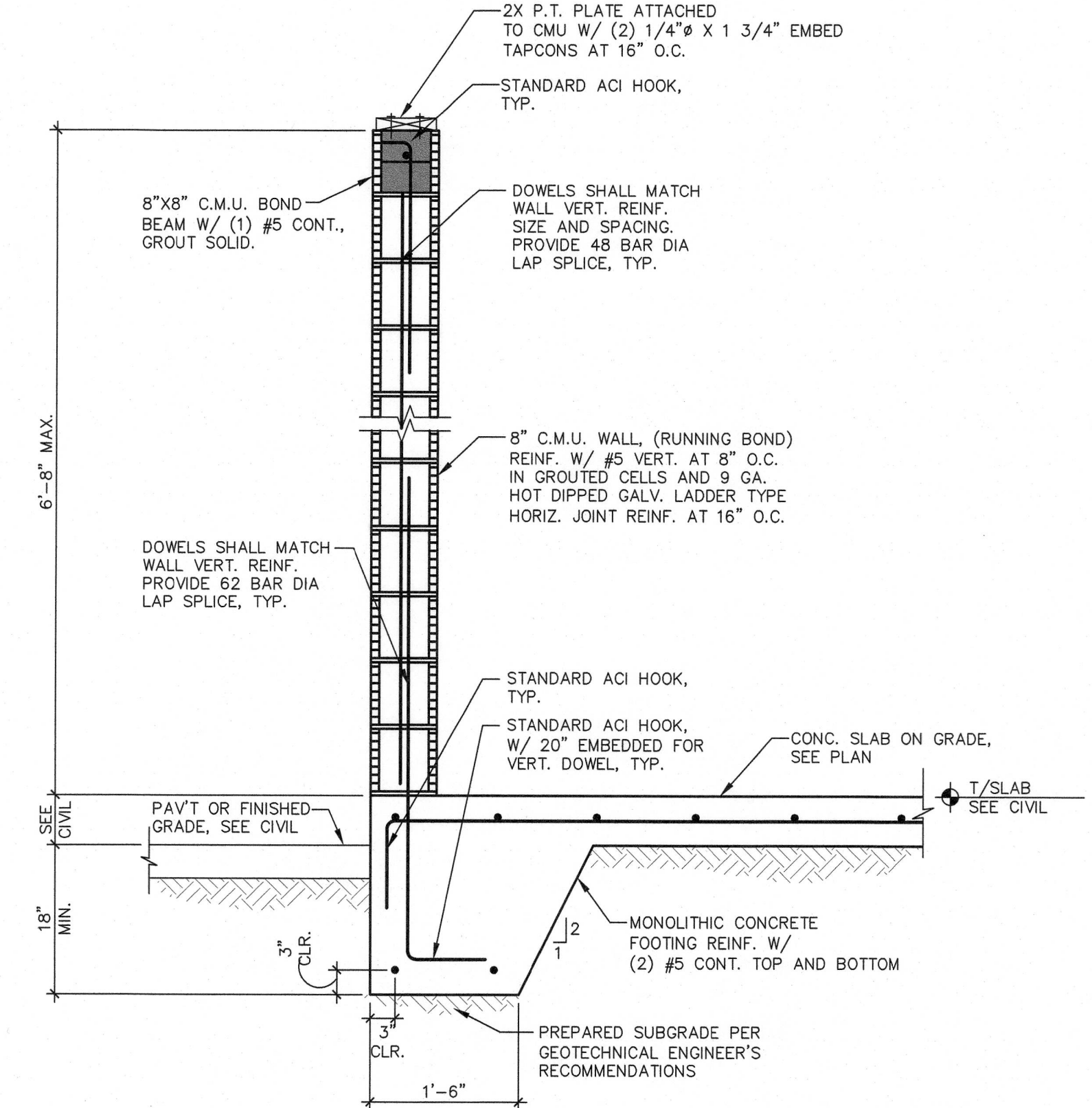
**DETAIL 2**  
1-1/2" = 1'-0"



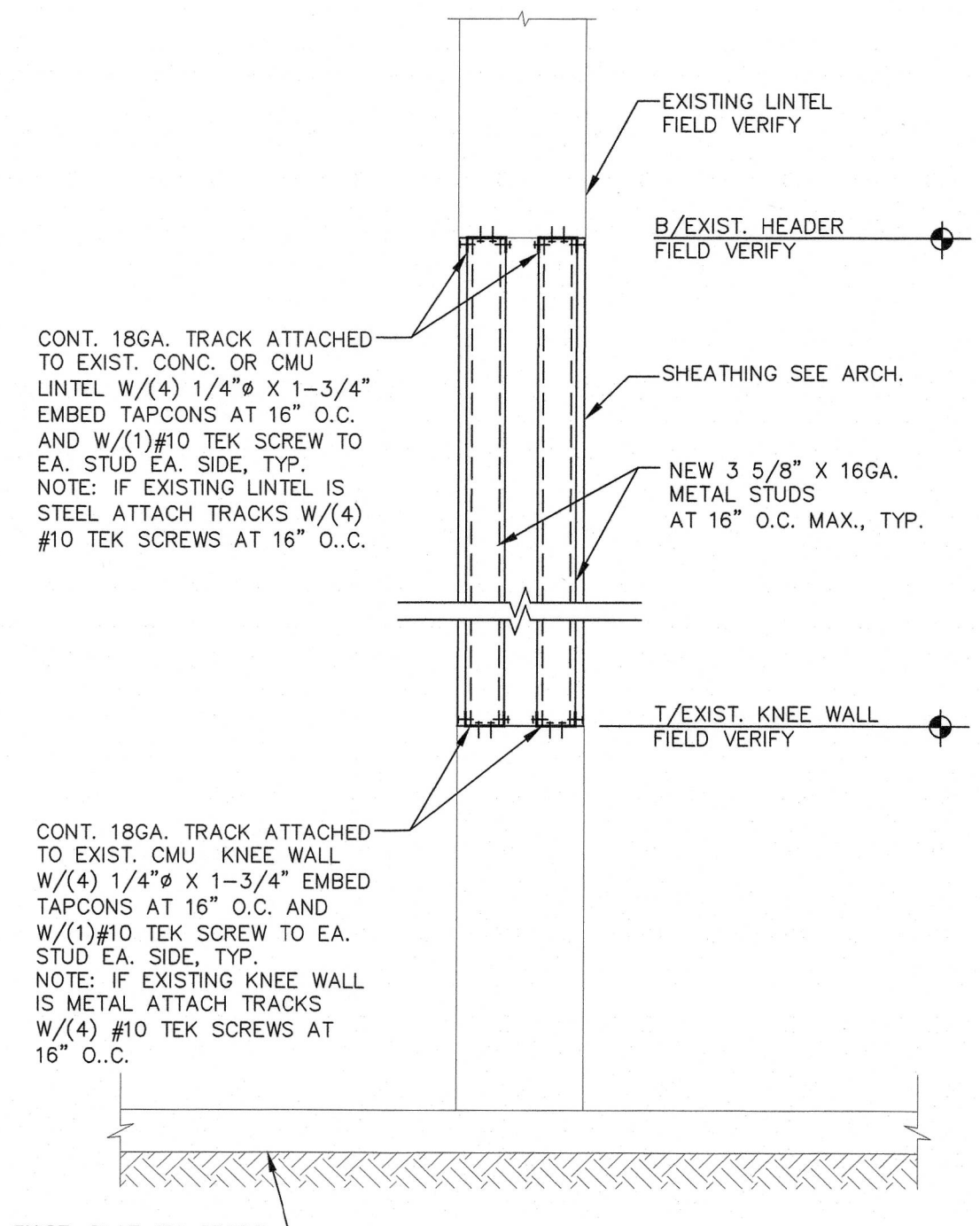
**CORNER BAR(S) DETAIL**



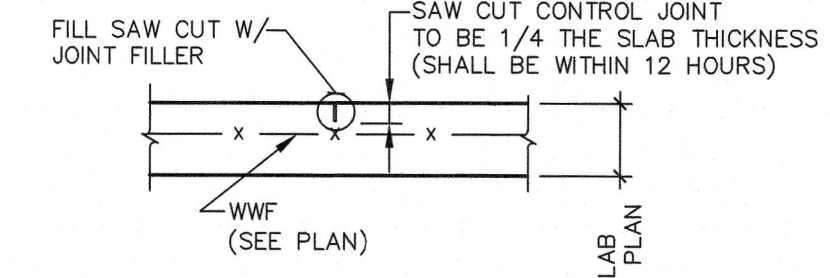
**DETAIL 3**  
1-1/2" = 1'-0"



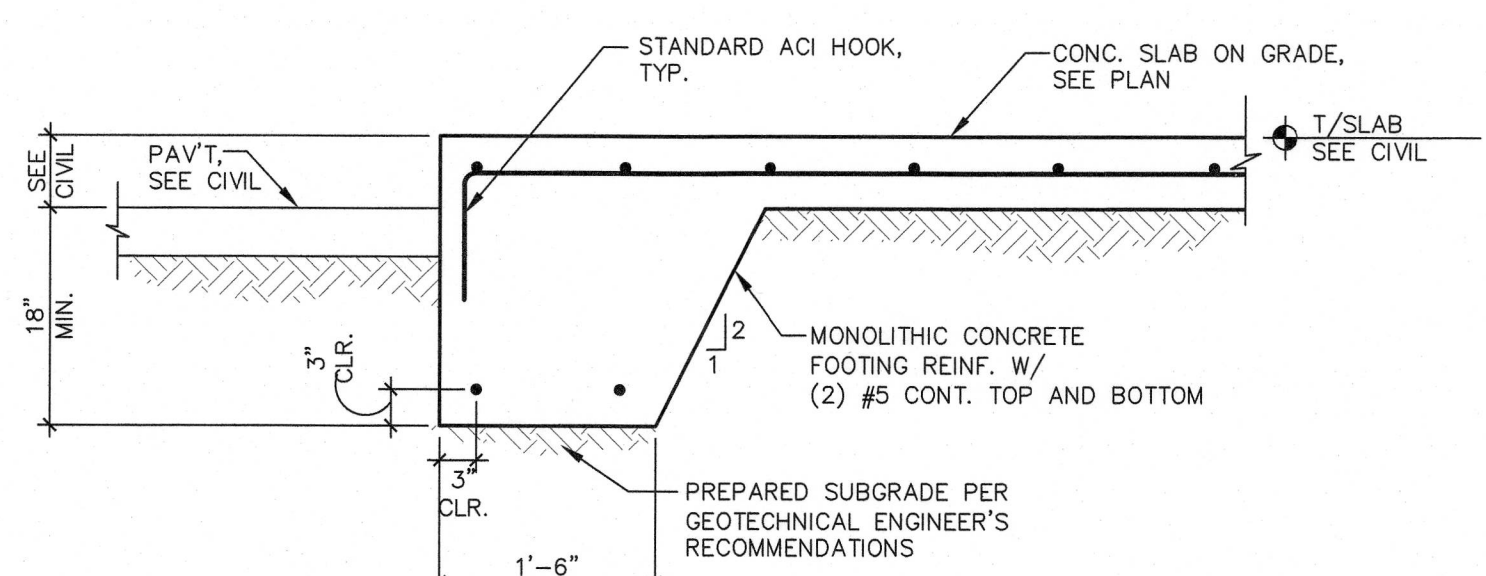
**SECTION 4**  
3/4" = 1'-0"



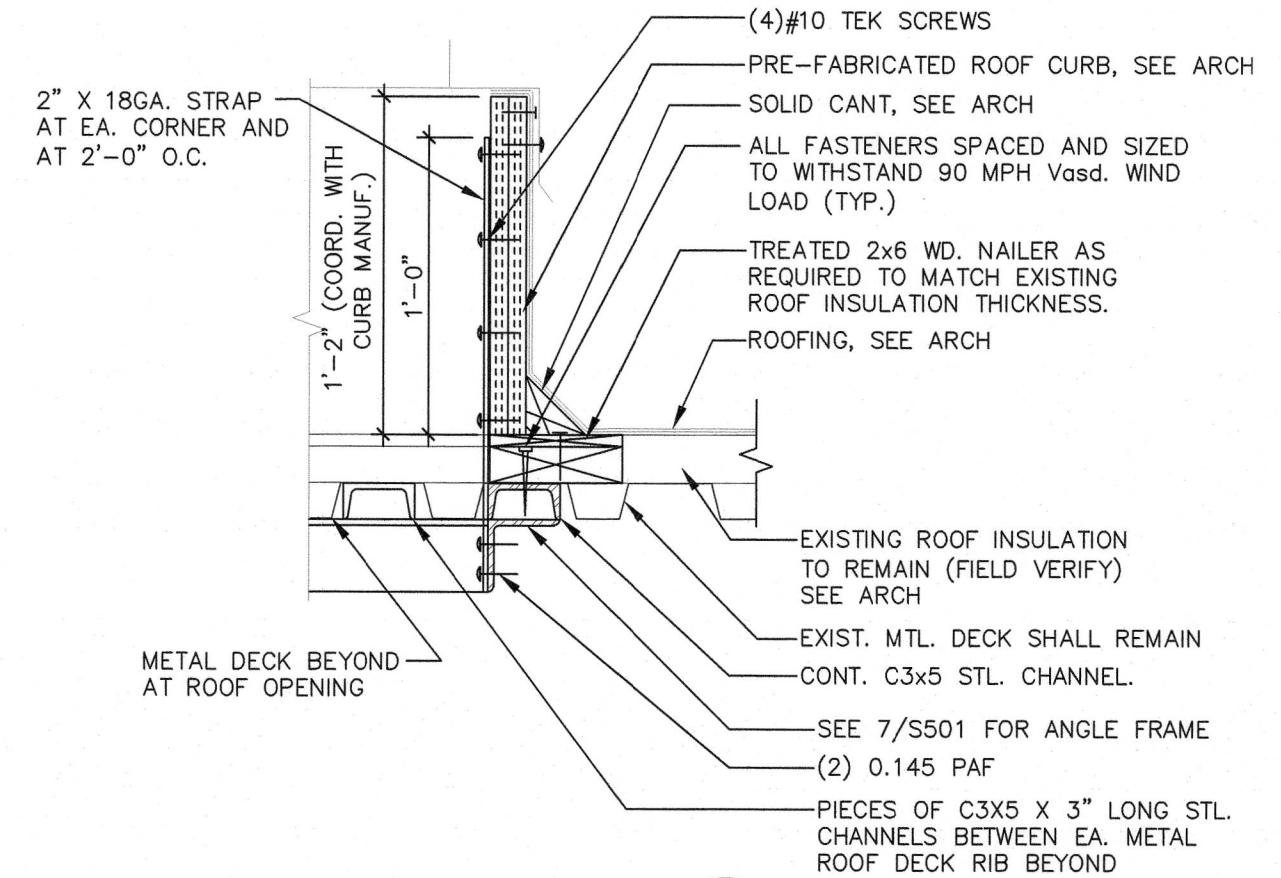
**DETAIL 5**  
1-1/2" = 1'-0"



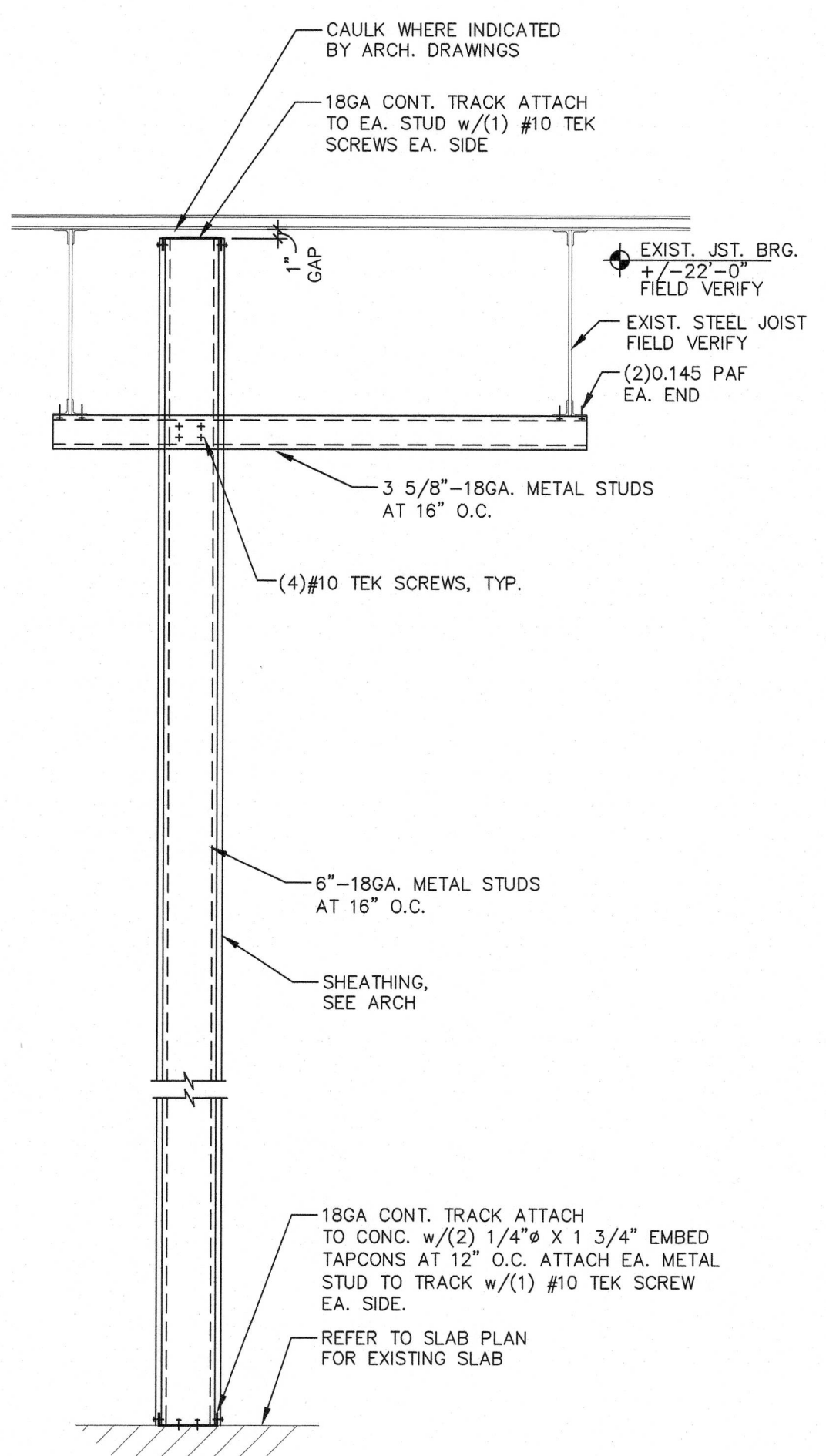
**SAW CUT CONTROL JOINTS**



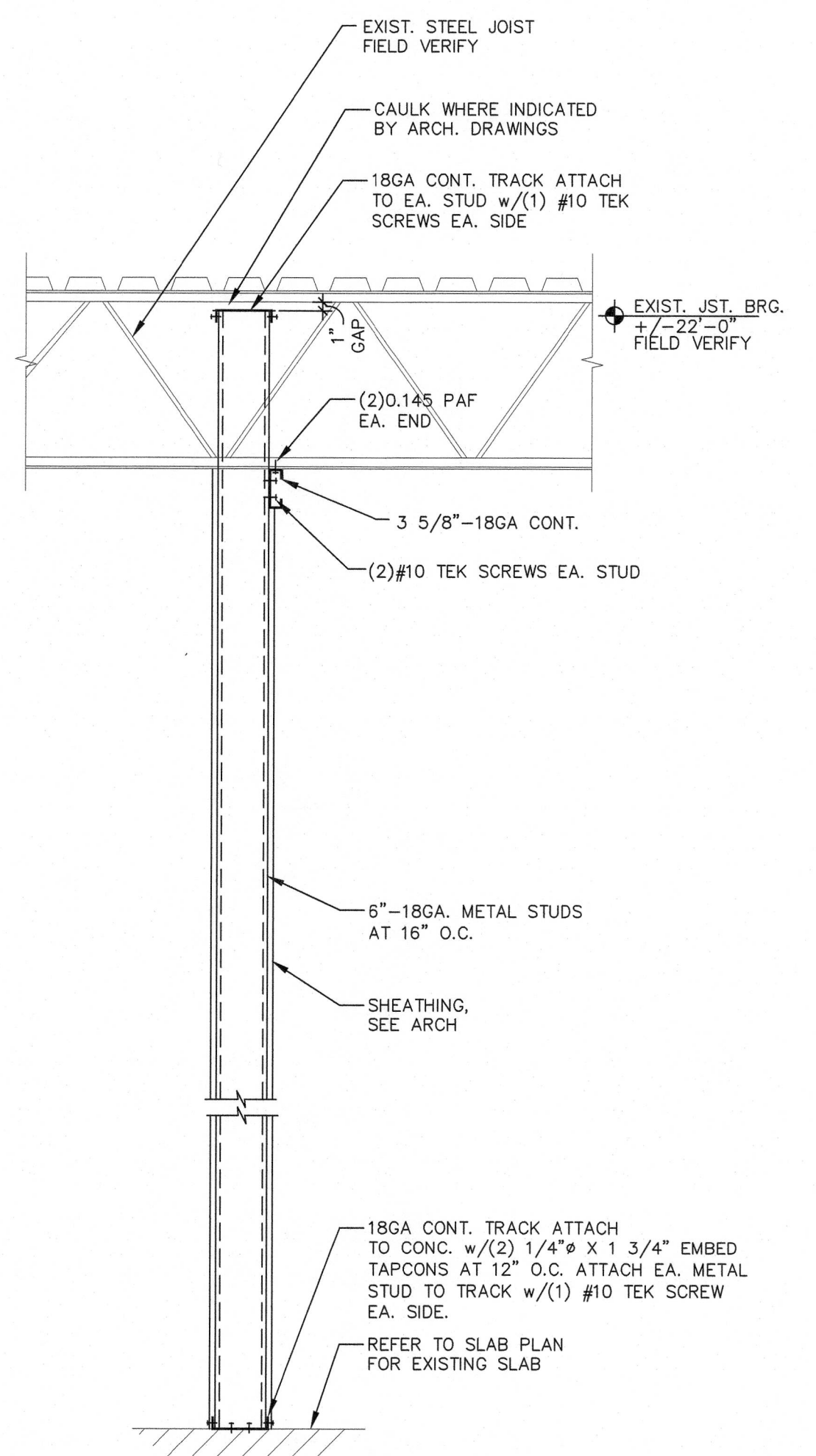
**SECTION 4A**  
3/4" = 1'-0"



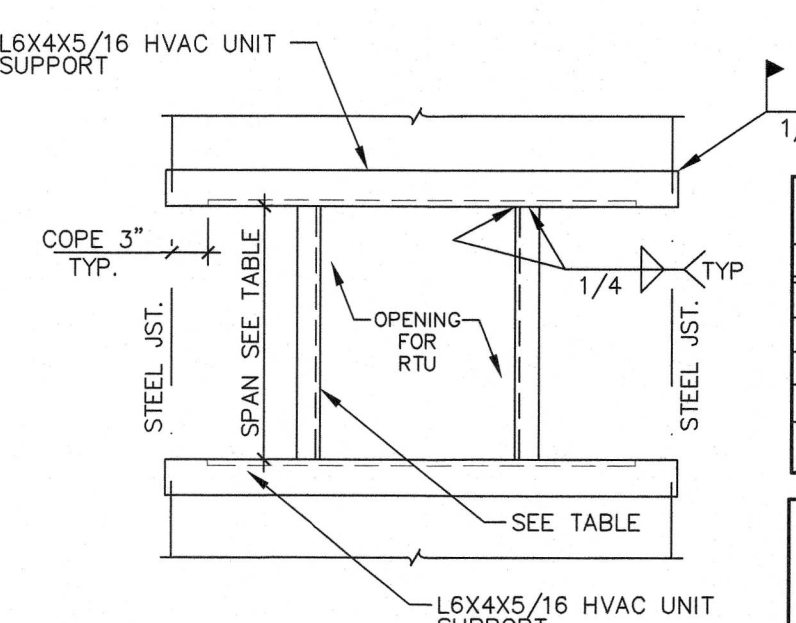
**DETAIL 6**  
1-1/2" = 1'-0"



**SECTION 9**  
3/4" = 1'-0"



**SECTION 10**  
3/4" = 1'-0"

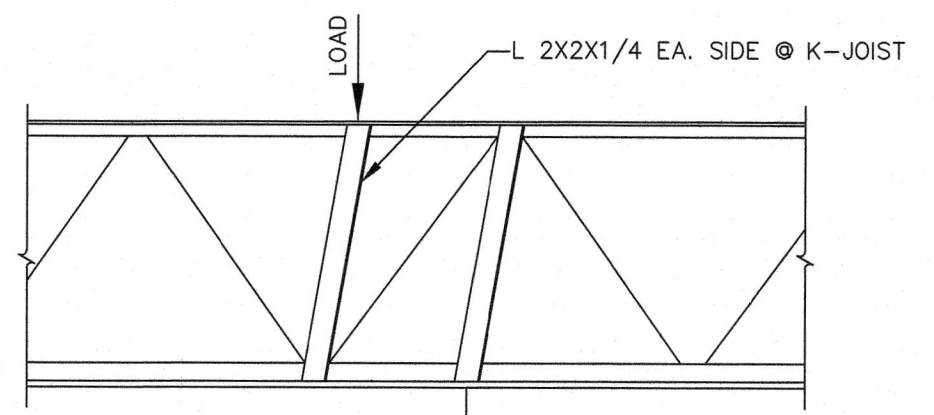


**TYP. ROOF OPENING HVAC SUPPORT FMG.**

**DETAIL 7**  
N.T.S.

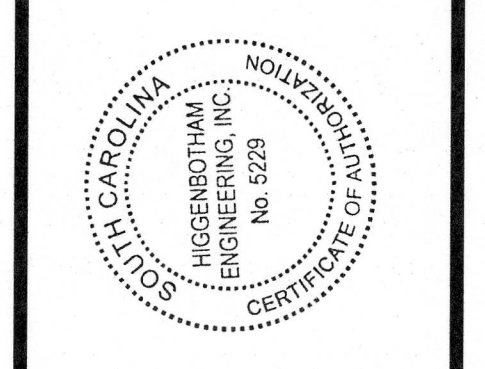
SPAN	L SIZE
UP TO 4'-0"	L3x3x3/16
4'-1" TO 6'-0"	L4x3x1/4 (LLV)
6'-1" TO 8'-0"	L5x3x1/4 (LLV)
8'-1" TO 10'-0"	L6x4x5/16 (LLV)
HVAC UNIT SUPPORT	L6x4x5/16 (LLV)

FOR SIZE AND LOCATION OF REQUIRED ROOF OPENING VERIFY W/ MECHANICAL ORS. OR HVAC MANUFACTURER



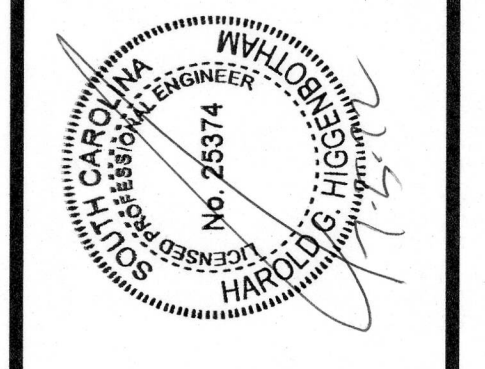
**JOIST CONCENTRATED LOAD REINFORCEMENT**

**DETAIL 8**  
N.T.S.



**HIGGENBOTHAM**  
Engineering, Inc.  
Structural Engineers  
2322 Centre Drive, Suite F  
Altamonte Springs, FL 32717  
Phone: 407.286.2881  
Fax: 407.286.2882  
SOUTH CAROLINA COA NUMBER 5025

ENGINEER'S SEAL:



HAROLD G. HIGGENBOTHAM  
PROFESSIONAL ENGINEER  
SC REG. NO. 25374

REVISIONS  
NO. DATE REMARKS

**FOOD LION**  
2110 Duxedrive Drive, Salisbury, NC 28147  
Telephone: 704.333.9250  
Food Lion is an ANOLD DELHAIZE company.

**FOOD LION REMODEL STORE #2839**  
860 PARRIS ISLAND GTWY  
BEAUFORT, SC 29906

PROJECT NO: 2021.1218  
DATE: 7/5/22

27 OF 54  
**S5.01**  
STRUCTURAL DETAILS

CHECKED: HIGH DRAWN: RED