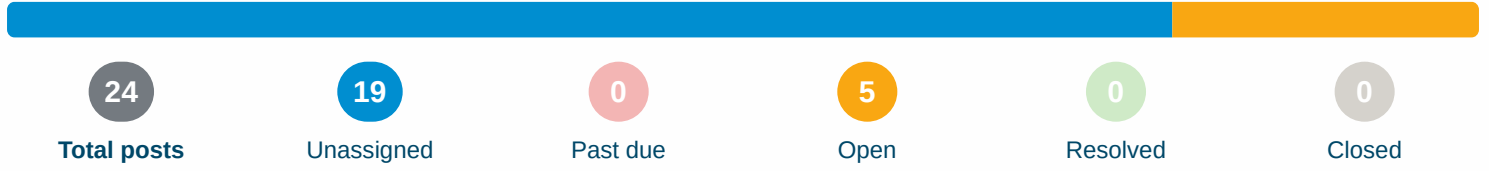




FOOD LION #2839 REVISED DRAIN SURVEY PER ENGINEERING REVIEW

11-08-2021 5/17/2021 - 11/16/2021



Posts

 **Open**

Post 16 - Deli cleanout inaccessible



Joshua Blanks - Crescent Construction Services

10/19/2021, 12:26 PM EDT

To: Assignees, Crescent Construction Services

Cleanout should be made accessible for full inspection.

Assigned To 

 **Plumbing Contractor**

No due date

Open

All Media  3 photos




Updates



Rachael Desch - Crescent Construction Services

11/16/2021, 12:14 PM EST

 Per email from Food Lion Engineering on 11/8/21, item is to be included in remodel documents.

 **Open**

Post 17 - Cleanout CO7 line - Joint offset at 126' and 128'.



Joshua Blanks - Crescent Construction Services

10/19/2021, 12:25 PM EDT

To: Assignees, Crescent Construction Services

Issue is located 49' off deli front wall and 19'3" left of deli right wall; line is approximately 4'7" deep.

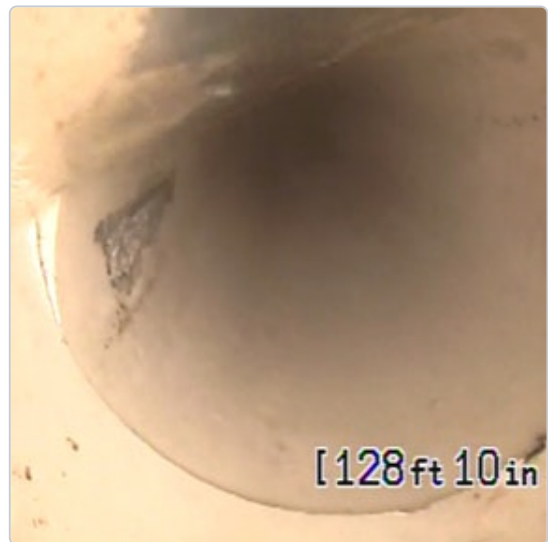
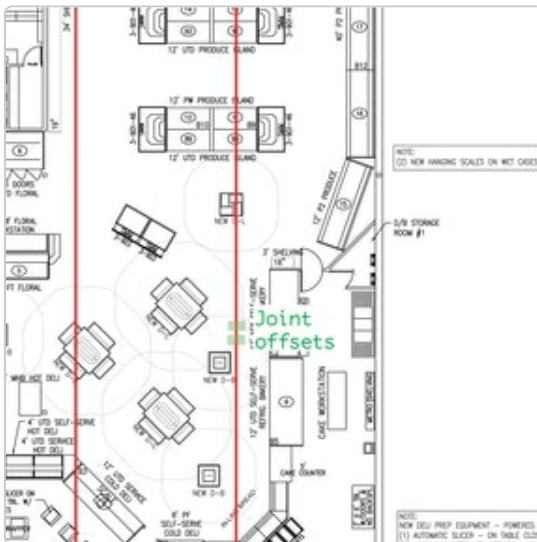
Assigned To 

 **Plumbing Contractor**

No due date

Open

All Media  5 photos





Updates



Rachael Desch - Crescent Construction Services

11/16/2021, 12:14 PM EST



Per email from Food Lion Engineering on 11/8/21, item is to be included in remodel documents.

 **Open**

Post 14 - CO3 line - Fracture at 28'.



Joshua Blanks - Crescent Construction Services

10/19/2021, 12:25 PM EDT

To: Assignees, Crescent Construction Services

Repair. Issue is located 108'6" right of right sales wall and 6' off rear sales wall; line is approximately 1'7" deep.

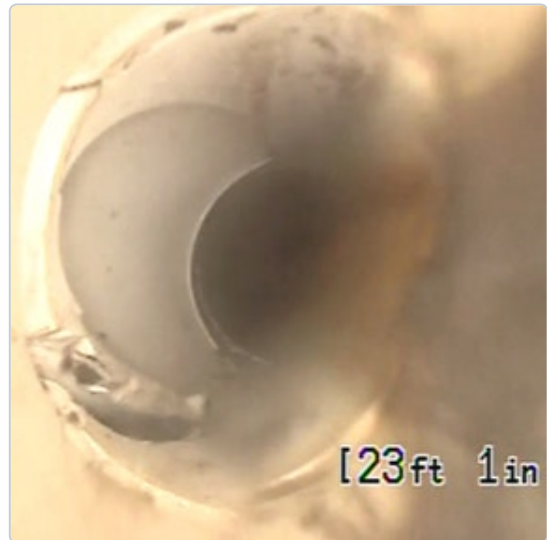
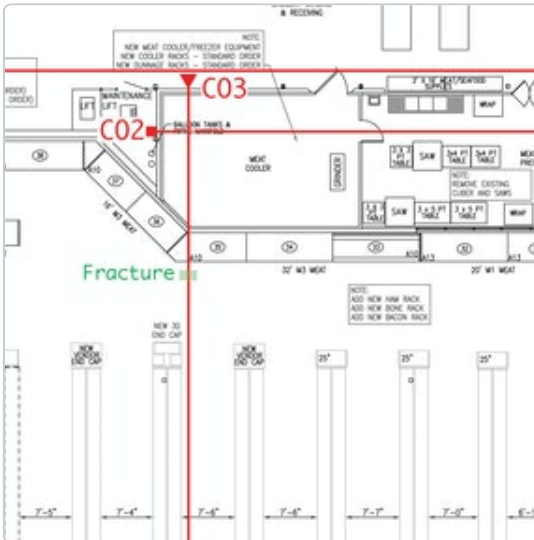
Assigned To 

 **Plumbing Contractor**

No due date

Open

All Media  4 photos




Updates



Rachael Desch - Crescent Construction Services

11/16/2021, 12:14 PM EST

 Per email from Food Lion Engineering on 11/8/21, item is to be included in remodel documents.

 **Open**

Post 15 - CO5 line blockage



Joshua Blanks - Crescent Construction Services

10/19/2021, 12:25 PM EDT

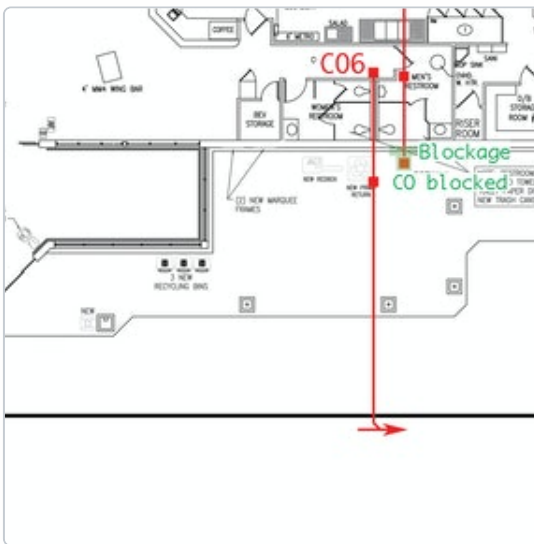
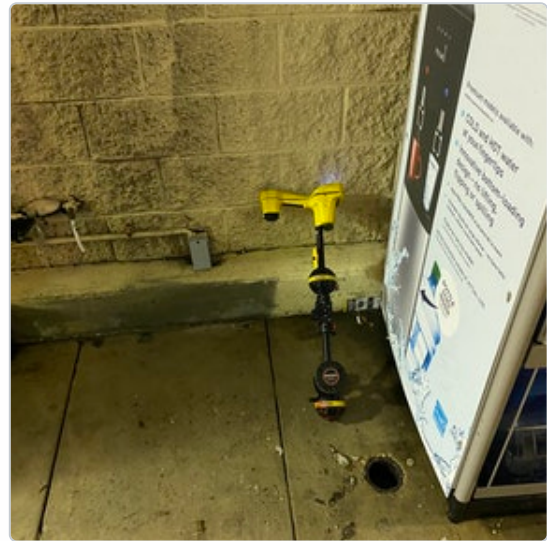
To: Assignees

Blockage located on front right sidewalk, in cleanout riser. Remove blockage. Crescent to inspect line after blockage has been removed.

Assigned To 

| | | |
|--|-------------|-------------|
|  Crescent Construction Services | No due date | Open |
|  Plumbing Contractor | No due date | Open |

All Media  3 photos




Updates



Rachael Desch - Crescent Construction Services

11/16/2021, 12:14 PM EST

 Per email from Food Lion Engineering on 11/8/21, item is to be included in remodel documents.

 **Open**

Post 18 - Grease interceptor outlet cleanout; CO8 lacking plug



Joshua Blanks - Crescent Construction Services

10/19/2021, 12:25 PM EDT

To: Assignees, Crescent Construction Services

Lacking plug prior to arrival. 6", install.

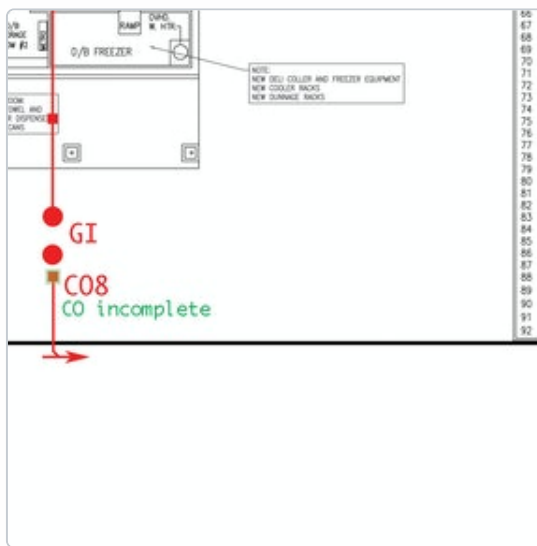
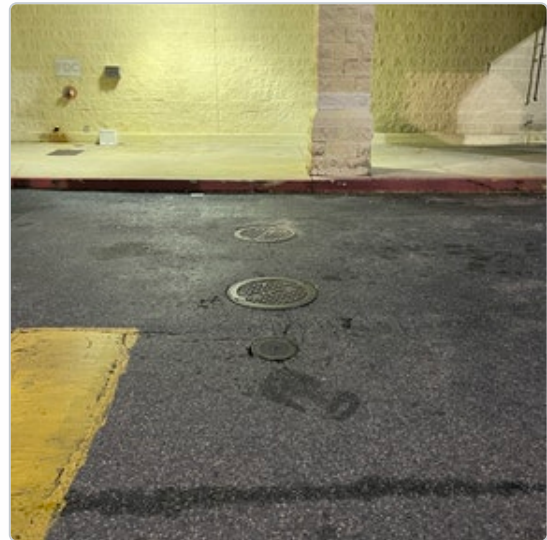
Assigned To 

 **Plumbing Contractor**

No due date

Open

All Media  3 photos




Updates



Rachael Desch - Crescent Construction Services

11/16/2021, 12:13 PM EST

 Per email from Food Lion Engineering on 11/8/21, item is to be included in remodel documents.

 **Unassigned****Post 2 - Latest print is attached (for reference)****Dave Hughey** - Crescent Construction Services

10/19/2021, 12:18 PM EDT

To: Crescent Construction Services

NOTE: Still shots of low spots are taken from the best view CCS can obtain from the video and this is not necessarily the lowest part of the line. Unless otherwise noted, line issues are located using the camera's foot meter which may vary by up to 10%. Red squares mark floor cleanouts, red triangles mark wall cleanouts, and red X's show where items have not been installed as per print.

Attachments  [fl2839_drain_print_09-21-2021.pdf \(13.3 MB\)](#)

 **Unassigned**

Post 7 - Links to cleanout line videos (for reference)



Dave Hughey - Crescent Construction Services

10/18/2021, 4:12 PM EDT

To: Crescent Construction Services

Link to videos from 09/21/2021:

<https://crescentconstructionservices.box.com/s/0cby1vvekra4fphntk49kxd9jkfaoyx0>

 **Unassigned**

Post 3 - Construction Manager to review cleanouts for possible repair (for reference)



Dave Hughey - Crescent Construction Services

10/18/2021, 4:12 PM EDT

To: Crescent Construction Services

The sales floor cleanouts typically have surrounding tile damage / unlevel / should be cleared of excess wax and debris. Ensure all are level with finish floor upon closeout of remodel. Consider replacing fixtures.

All Media  3 photos



 **Unassigned**

Post 6 - Smoke test showed no issues - 09/21/2021



Dave Hughey - Crescent Construction Services

To: Crescent Construction Services

10/18/2021, 4:11 PM EDT

 **Unassigned**

Post 5 - Smoke test performed from cleanouts C01, C05, C06, and C09-09/21/2021

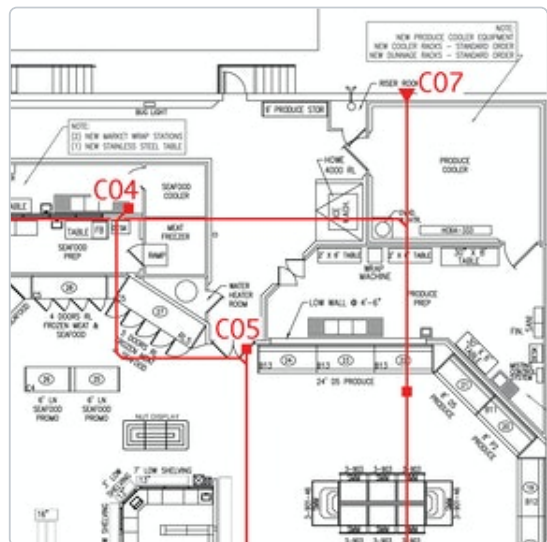
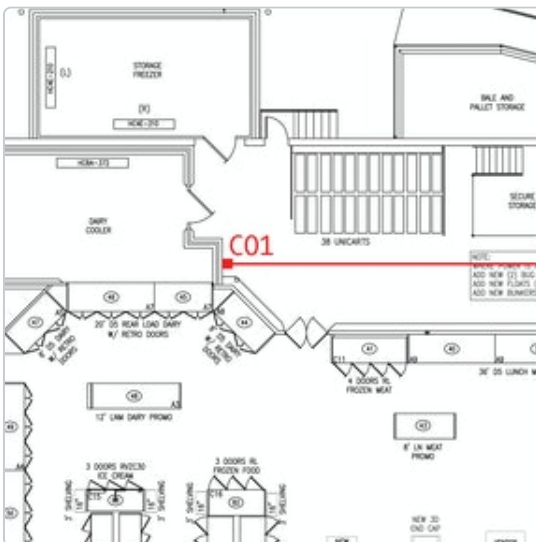


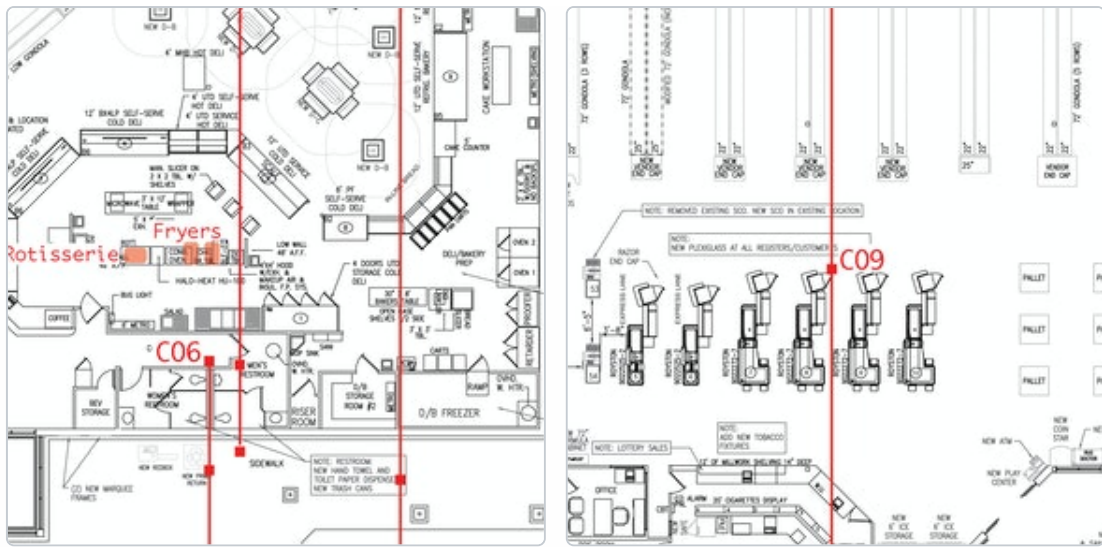
Dave Hughey - Crescent Construction Services

10/18/2021, 4:11 PM EDT

To: Crescent Construction Services

All Media  8 photos





 **Unassigned**

Post 9 - Grease interceptor - Appears to be functioning normally with inlet 1" above outlet.

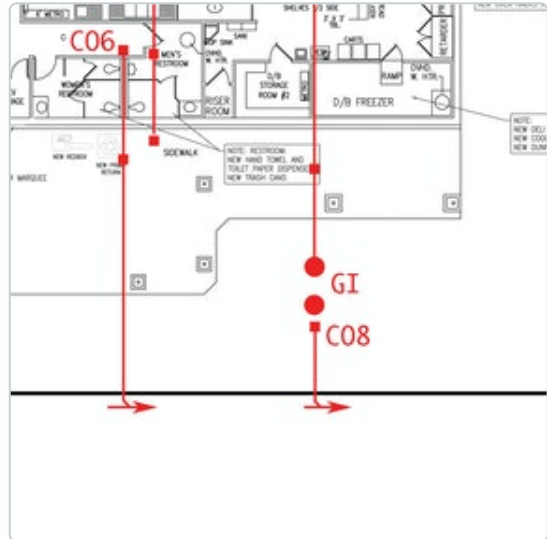


Dave Hughey - Crescent Construction Services

10/18/2021, 4:11 PM EDT

To: Crescent Construction Services

All Media  4 photos



 **Unassigned**

Post 8 - Manhole



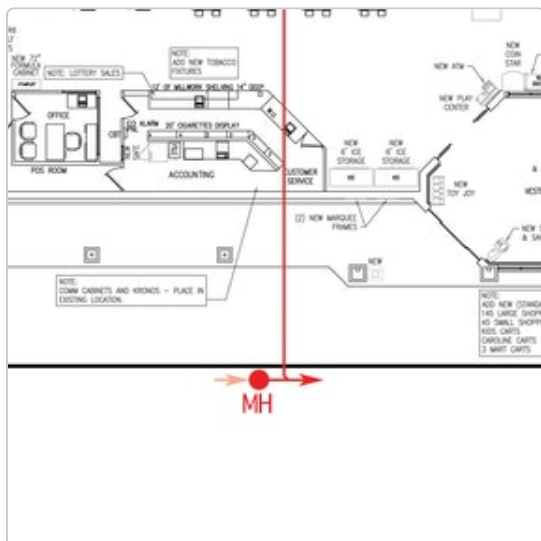
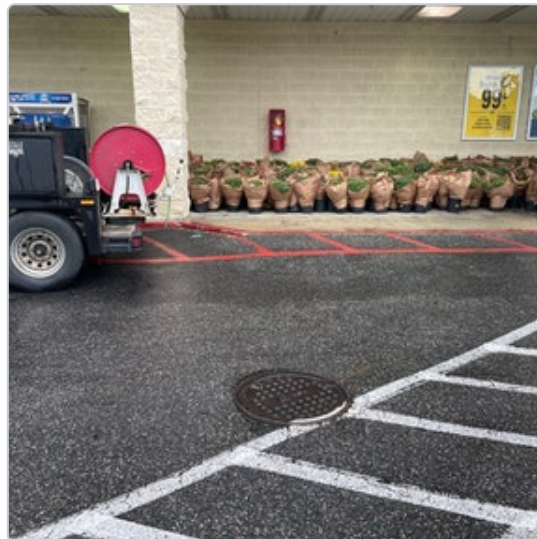
Dave Hughey - Crescent Construction Services

10/18/2021, 4:11 PM EDT

To: Crescent Construction Services

Manhole is flowing/operating normally.

All Media  3 photos



 **Unassigned**

Post 13 - Deli grease drain - prep area verifications



Dave Hughey - Crescent Construction Services

10/18/2021, 4:11 PM EDT

To: Crescent Construction Services

The deli prep area floor drains, prep sinks, and mop sink were confirmed to go to CO7 line.

All grease prep area sinks and drains were confirmed to go to a grease retention structure.

All Media  5 photos



Unassigned

Post 12 - Meat grease drain - prep area verifications



Dave Hughey - Crescent Construction Services

10/18/2021, 4:11 PM EDT

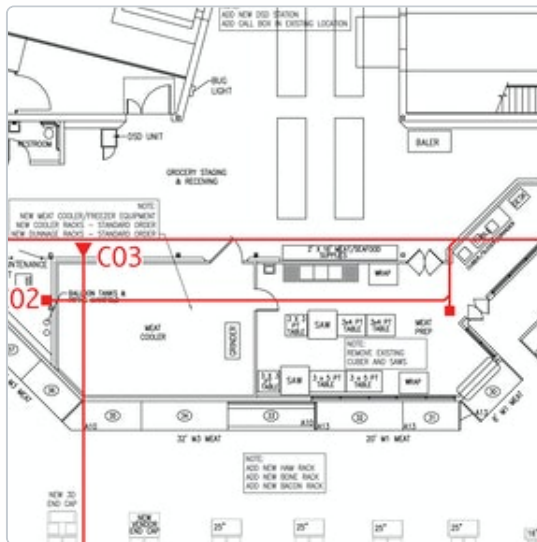
To: Crescent Construction Services

The meat prep area floor drains and prep sinks were confirmed to go to CO1/CO2 lines.

The grocery storage mop sink was confirmed to go to CO3 line.

The grocery storage mop sink is not serviced by a grease retention structure.

All Media  3 photos



Unassigned

Post 10 - All individual prep area grease waste drains were cleaned with mini jet kit.



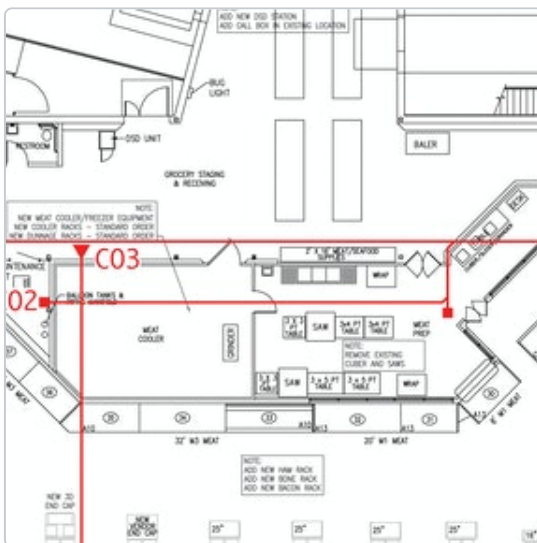
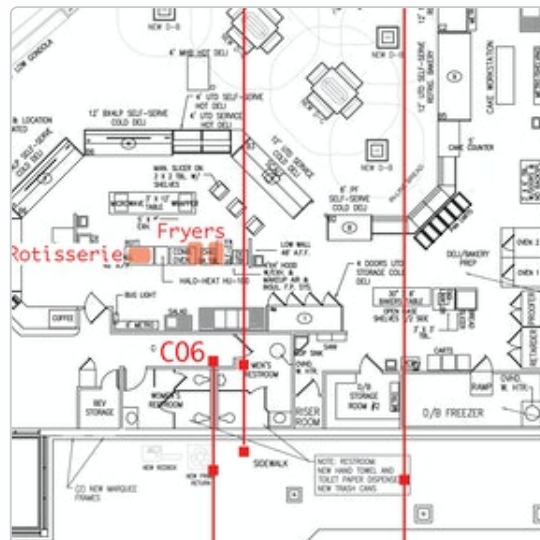
Dave Hughey - Crescent Construction Services

10/18/2021, 4:11 PM EDT

To: Crescent Construction Services

Deli drains were flow tested due to inaccessible cleanout.

All Media  3 photos



 **Unassigned**

Post 11 - Deli Equipment



Dave Hughey - Crescent Construction Services

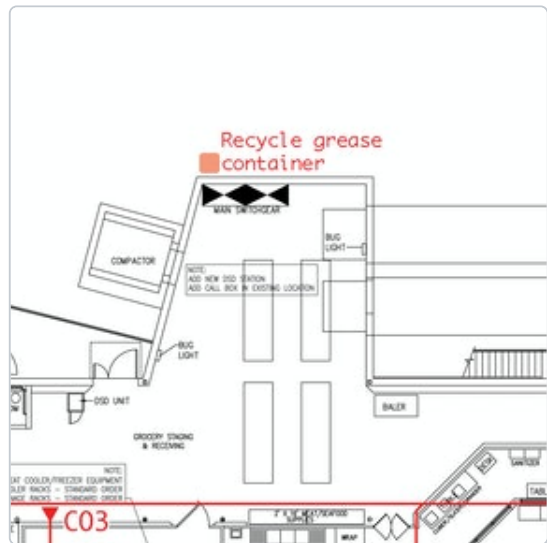
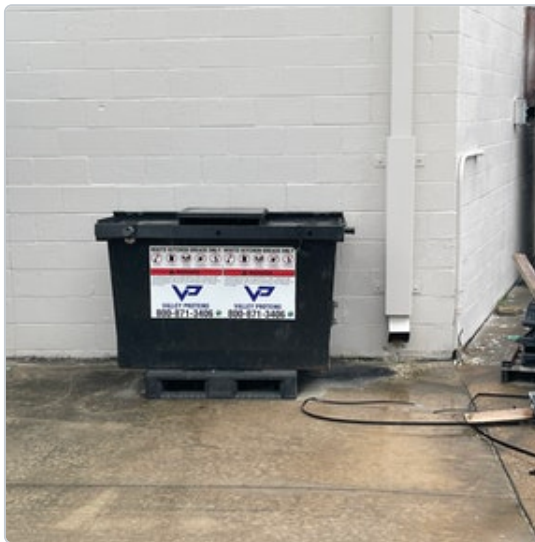
10/18/2021, 4:10 PM EDT

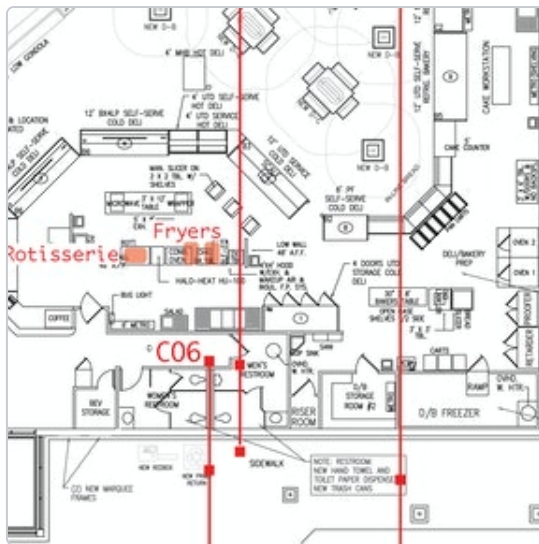
To: Crescent Construction Services

Recycle grease container verified to be onsite.

Rotisserie and fryers appear to be manually emptied.

All Media  5 photos





 **Unassigned**

Post 25 - CO1 line (for reference)



Rachael Desch - Crescent Construction Services

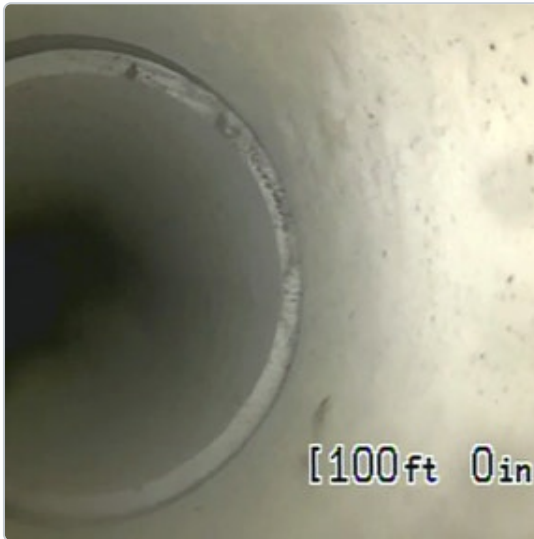
10/18/2021, 4:10 PM EDT

To: Crescent Construction Services

Invert elevation is 19.5" BFF. Jetted line. Filmed backwards from CO7 line. Joint offset at 98' and 100'.

Categories  *Grease line*

All Media  *2 photos*



 **Unassigned**

Post 24 - CO2 line (for reference)



Rachael Desch - Crescent Construction Services

10/18/2021, 4:10 PM EDT

To: Crescent Construction Services

Invert elevation is 15" BFF. Filmed backwards from CO1 line. Line in good shape.

Categories  *Grease line*

 **Unassigned**

Post 23 - CO3 line (for reference)



Rachael Desch - Crescent Construction Services

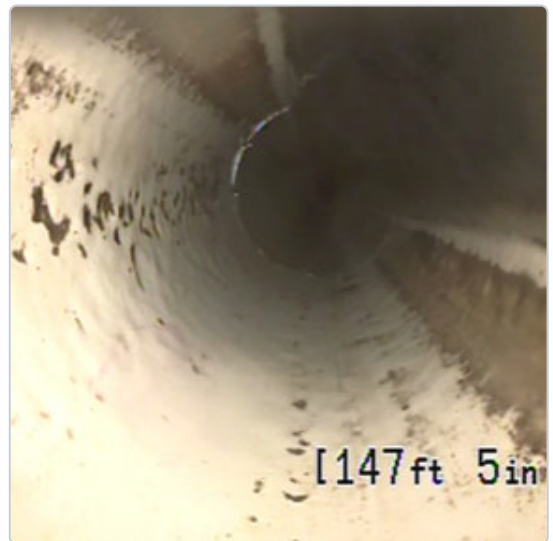
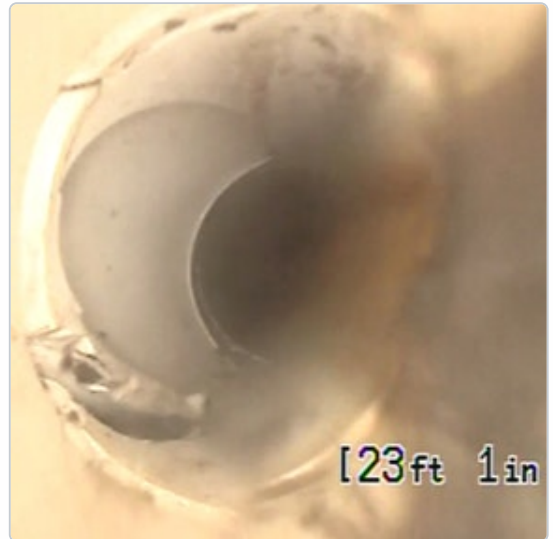
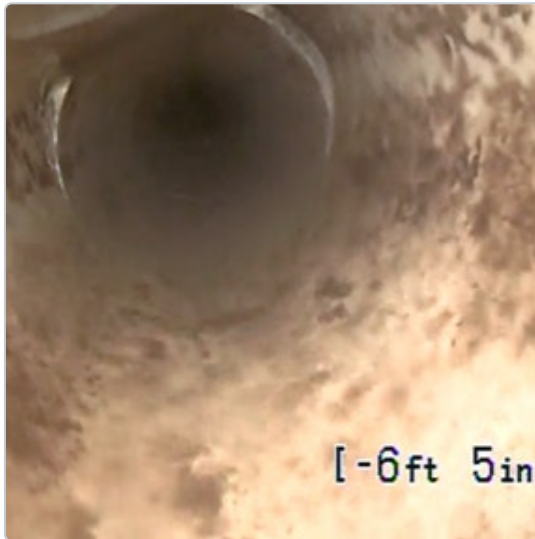
10/18/2021, 4:10 PM EDT

To: Crescent Construction Services

Filmed backwards from site line. Joint offset at 1'. Pipe deformation at 6'. Fracture at 28'. Sag from 146' to 157' (1").

Categories  *Site line, Restroom line*

All Media  4 photos



 **Unassigned**

Post 22 - CO4 line (for reference)



Rachael Desch - Crescent Construction Services

10/18/2021, 4:10 PM EDT

To: Crescent Construction Services

Invert elevation is 16.5" BFF. Filmed backwards from CO5 line. Line in good shape.

Categories  *Condensate line*

 **Unassigned**

Post 21 - CO5 line (for reference)



Rachael Desch - Crescent Construction Services

10/18/2021, 4:10 PM EDT


To: Crescent Construction Services

Invert elevation is 20.25" BFF. Filmed backwards from issue at 157'. Sag, caused by blockage, from 85' to 157' (2"+; with camera under water part of issue). Blockage at 57'; 100% line loss.

Categories  *Site line, Condensate line*

All Media  2 photos



 **Unassigned**

Post 20 - CO6 line (for reference)



Rachael Desch - Crescent Construction Services

10/18/2021, 4:10 PM EDT

To: Crescent Construction Services

Invert elevation is 12.5" BFF. Filmed backwards from site line. Line in good shape.

Categories  *Site line, Restroom line*

 **Unassigned**

Post 19 - CO7 line (for reference)



Rachael Desch - Crescent Construction Services

10/18/2021, 4:10 PM EDT

To: Crescent Construction Services

Invert elevation is 15.5" BFF. Jetted line. Filmed backwards from grease interceptor. Joint offset at 7'. Joint offset at 126' and 128'. Sag from 147' to 175' (1"; with camera under water part of issue).

Categories  *Site line, Grease line*

All Media  4 photos



 **Unassigned**

Post 1 - CO8 line (for reference)



Dave Hughey - Crescent Construction Services

10/18/2021, 4:10 PM EDT

To: Crescent Construction Services

Filmed backwards from site line. Line in good shape.

Categories  *Site line*