



FOOD LION #2654 ELECTRICAL SURVEY, REVISED 01-10-24 4/2/2015 - 1/10/2024

Notes

Revised report ready for engineer. Added Phenolic Labeling for 6 Disconnect Rule.

Posts

 **Open**

Post 157 - Phenolic Labeling, Six Disconnect Rule



Brad Williams - Crescent Construction Services

1/10/2024, 4:33 PM EST

To: Assignees, Crescent Construction Services

Label all breakers (red on white phenolic) 1 of 6 Main Disconnects up through 5 of 6 Main Disconnects

Assigned To 

 Electrical Engineering	No due date	Open
 Electrical Contractor	No due date	Open

 **Unassigned**

Post 152 - One Line




Neil Gerald - Crescent Construction Services

1/10/2024, 10:38 AM EST

To: Crescent Construction Services

Attachments  [FL2654_One_Line.pdf \(252 kB\)](#)

 **Unassigned**

Post 153 - Panel/Distribution Schedule Data



Neil Gerald - Crescent Construction Services

1/10/2024, 10:38 AM EST

To: Crescent Construction Services

Attachments  [Distribution_Schedule_FL2654.xlsx \(25 kB\)](#), [Panel_Schedule_FL2654.xlsx \(44.3 kB\)](#)

 **Unassigned****Post 126 - Refrigeration Circuit Sizing (With A/C Cond)****Neil Gerald** - Crescent Construction Services

1/10/2024, 10:38 AM EST

To: Crescent Construction Services

Engineer to size main breakers / conductors per MOPD / MCA requirements for equipment.

**Do Not downsize breakers for existing equipment. See Disconnect Inventory for relative data

Attachments  [Refrigeration_Circuit_Sizing_FL2654.xlsx \(19.2 kB\)](#)

 **Open**

Post 110 - Panel Schedule Labeling



Neil Gerald - Crescent Construction Services

1/10/2024, 10:37 AM EST

To: Assignees, Crescent Construction Services

All schedules are to be 100% accurate, on card stock, typed, dated, and installed in a clear pocket. EC shall go through ALL existing electrical panels to trace and verify all circuits for accuracy. Receptacles and lighting are to be labeled by area/location. Sales floor lighting circuits are to include row number. Case circuits are to reference refrigeration circuits. Spare is a breaker with no wire. Blank is an empty slot. All wired and active breakers shall be properly scheduled. Note: Wired breakers with no active load / device shall be labeled as Spare, Ending Location. Do Not remove existing panel schedules. Electronic copies of all panel schedules are required at closeout.

Categories  **1**

Assigned To 

 Electrical Engineering	No due date	Open
 Electrical Contractor	No due date	Open

 **Open**

Post 121 - Emergency Lighting, Wiring/Scheduling Repair



Neil Gerald - Crescent Construction Services

1/10/2024, 10:34 AM EST

To: Assignees, Crescent Construction Services

Fed from Panel C (# 40).

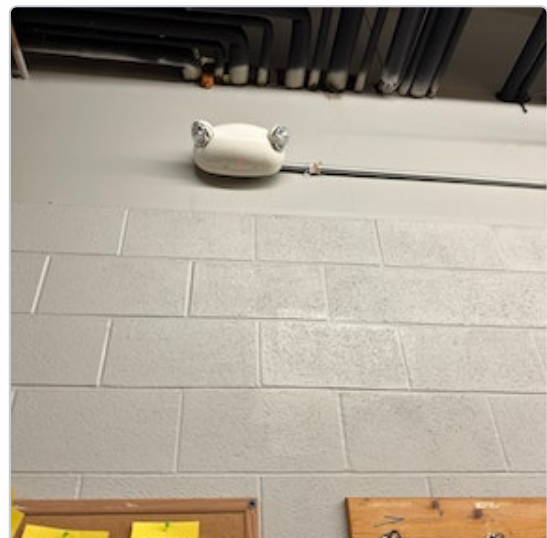
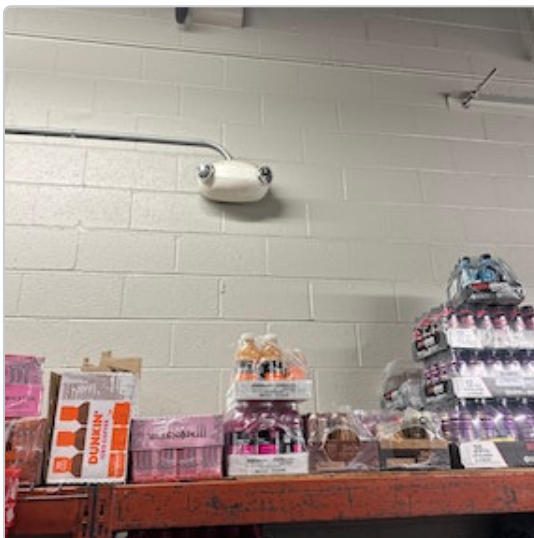
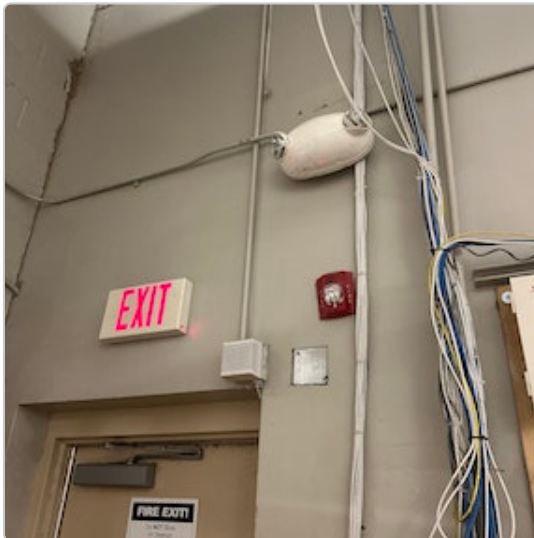
Lights at back stock, produce cooler, front entry were confirmed to not drop charge when the above circuits were de-energized.

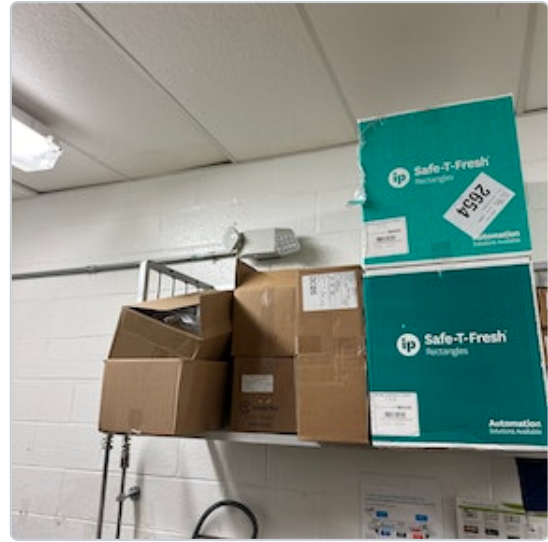
Repair, all emergency lighting shall be fed from a branch circuit panelboard, on the line side of any energy management controls (Constant Hot), and shall be labeled / scheduled as such. Emergency & Night Lighting circuits shall be dedicated, constant HOT, and not be mixed with any general lighting.

Assigned To 

-  **Electrical Engineering** No due date 
-  **Electrical Contractor** No due date 

All Media  6 photos





 **Open**

Post 122 - Install Restroom Emergency Lighting



Neil Gerald - Crescent Construction Services

1/10/2024, 10:33 AM EST

To: Assignees, Crescent Construction Services

Install emergency lighting in both restrooms.

Assigned To 

 Electrical Engineering	No due date	Open
 Electrical Contractor	No due date	Open

All Media  1 photo



 **Open**

Post 130 - Update Egress Lighting X (5)



Neil Gerald - Crescent Construction Services

1/10/2024, 10:33 AM EST

To: Assignees, Crescent Construction Services

Update fixtures on the following doors: left entrance, right entrance, and (3) rear/sides . Remove any existing remote battery packs, and provide 120v connections as needed.

Assigned To 



Electrical Engineering

No due date

Open

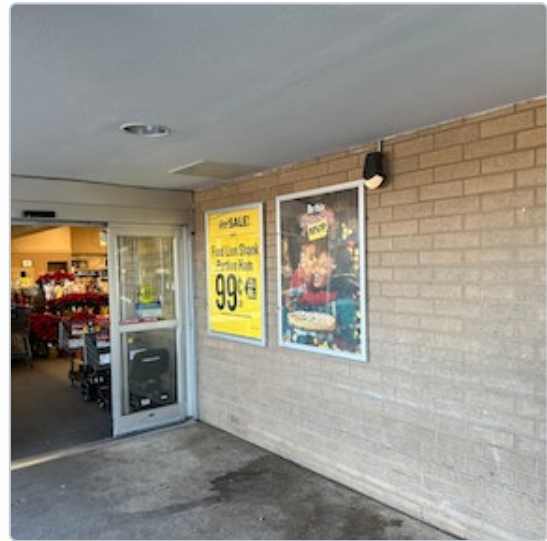


Electrical Contractor

No due date

Open

All Media  5 photos





 **Open**

Post 116 - Grinder - Repair



Neil Gerald - Crescent Construction Services

1/10/2024, 10:27 AM EST

To: Assignees, Crescent Construction Services

Install strain relief on cord drop.

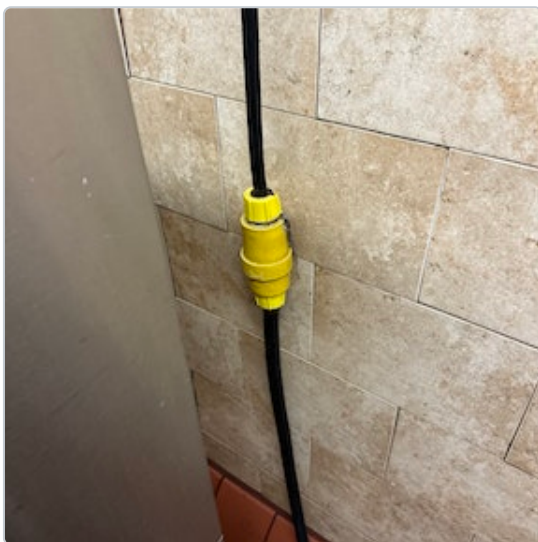
Assigned To 

 **Electrical Contractor**

No due date

Open

All Media  2 photos



 **Open**

Post 156 - Electrical General Notes; Add Or Change:



Brad Williams - Crescent Construction Services

1/10/2024, 10:27 AM EST

To: Assignees, Crescent Construction Services

-All distribution sections, branch panels, main breakers & disconnects shall have phenolic labels, (1 & 1/2" black on white). Main breaker and safety disconnect labeling shall match. Electrical and mechanical drawings will dictate naming. Labels can be ordered from CD Controls the national account breaker supplier.

-Review all existing single pole breaker sizing, correct as needed per code and equipment nameplate.

-Emergency & Night Lighting circuits shall be dedicated, constant HOT, and not be mixed with any general lighting.

Assigned To 

 Electrical Engineering	No due date	Open
 Electrical Contractor	No due date	Open

 **Open**

Post 155 - Existing Neutrals, Case Lighting & Fans



Brad Williams - Crescent Construction Services


1/10/2024, 10:26 AM EST

To: Assignees, Crescent Construction Services

This only applies to new and relocated case work; lights and fans are to have dedicated neutrals.

Assigned To 

 Electrical Engineering	No due date	Open
 Electrical Contractor	No due date	Open

 **Unassigned**

Post 123 - General Arc Flash Labeling Complete.



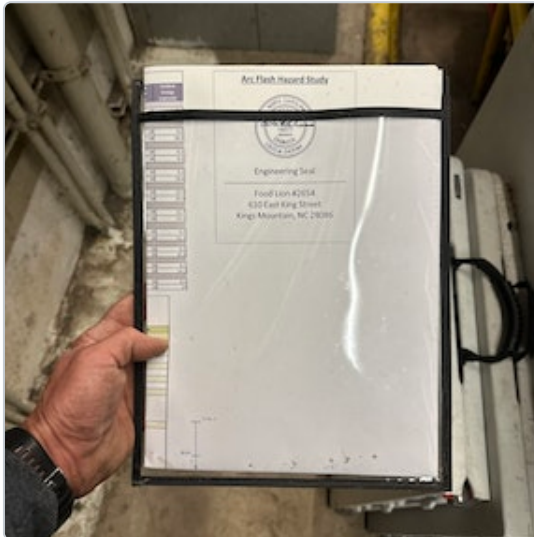
Neil Gerald - Crescent Construction Services


1/10/2024, 10:19 AM EST

To: Crescent Construction Services

Report removed.

All Media  2 photos



 **Unassigned**

Post 120 - Existing MC Cabling Home-runs



Neil Gerald - Crescent Construction Services

1/10/2024, 10:16 AM EST

To: Crescent Construction Services

Existing runs are as follows:

-(1) Entering the top of Panel PA-1.

**No new MC is to be installed as a home run.

All Media  1 photo



 **Unassigned**

Post 119 - Conduit Fittings And Support



Neil Gerald - Crescent Construction Services

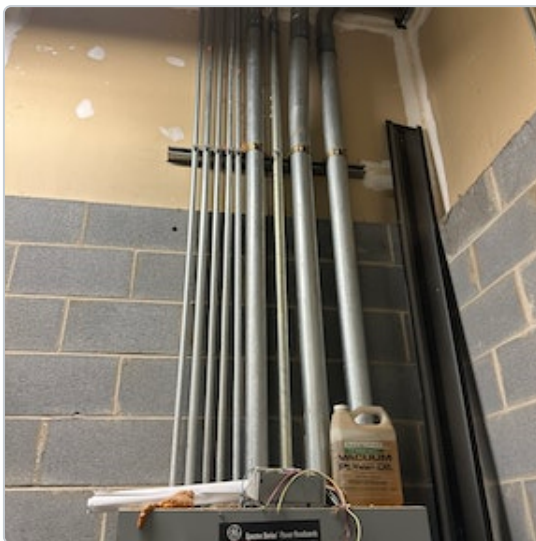
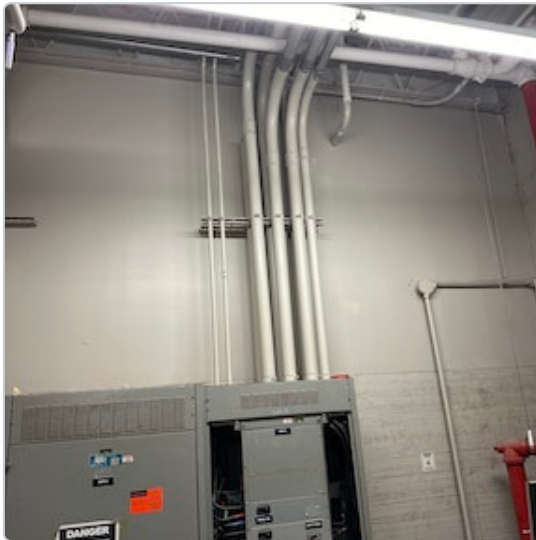
1/10/2024, 10:15 AM EST

To: Crescent Construction Services

Fittings are compression and set-screw type.

New fittings are to be compression type.

All Media  4 photos



 **Unassigned**

Post 118 - SweatMiser



Neil Gerald - Crescent Construction Services

1/10/2024, 10:15 AM EST

To: Crescent Construction Services

Fed from Panel PB (#19), 20A breaker, 12 AWG. 9 of 16 channels in use.

All Media  2 photos



 **Unassigned**

Post 154 - Meat Saw - (For Reference Only)



Brad Williams - Crescent Construction Services

1/10/2024, 10:14 AM EST

To: Crescent Construction Services

Cord drop and disconnect still in place. Equipment has been removed.

All Media  1 photo



 **Unassigned**

Post 115 - Rack Oven



Neil Gerald - Crescent Construction Services

1/10/2024, 10:06 AM EST

To: Crescent Construction Services

Fed from MDP-3, 125 amp breaker, 2 AWG. Re-use this setup as needed, Panel D is only a 200 amp panel.

All Media  3 photos



 **Unassigned**

Post 114 - Transformer; 500 KVA

 **Neil Gerald** - Crescent Construction Services
To: Crescent Construction Services

12/7/2023, 6:34 AM EST

All Media  2 photos



 **Unassigned**

Post 134 - MDP-1 Data; (with bus image)

 **Neil Gerald** - Crescent Construction Services
To: Crescent Construction Services

12/7/2023, 6:34 AM EST

All Media  6 photos



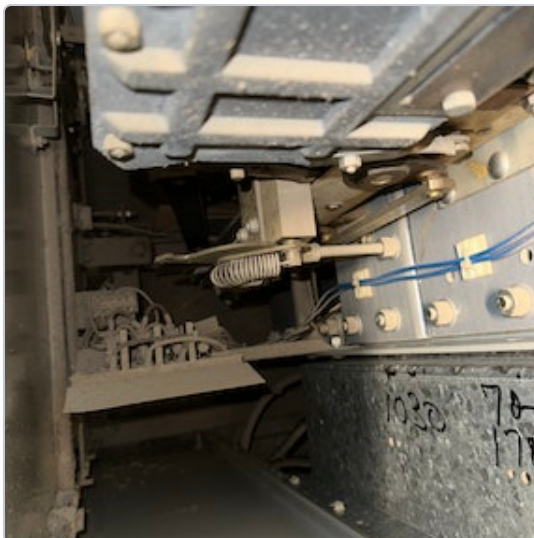
 Unassigned

Post 135 - MDP-2 Data; (with bus image)

 Neil Gerald - Crescent Construction Services
To: Crescent Construction Services

12/7/2023, 6:34 AM EST

All Media  7 photos





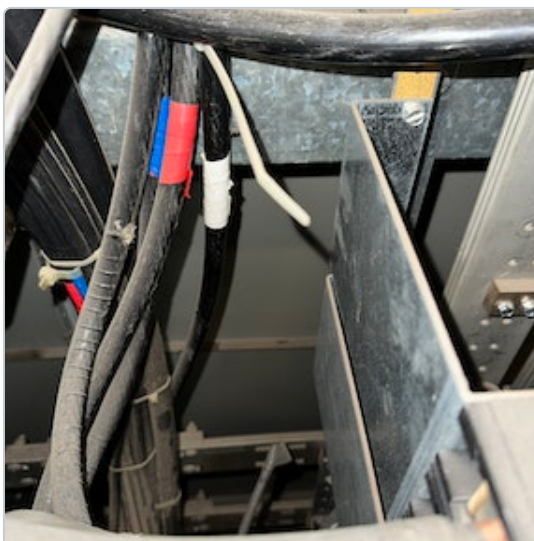
 **Unassigned**

Post 136 - MDP-3 Data; (with bus image)

 **Neil Gerald** - Crescent Construction Services
To: Crescent Construction Services

12/7/2023, 6:33 AM EST

All Media  5 photos



 **Unassigned**

Post 151 - SDP Data; (with bus image)

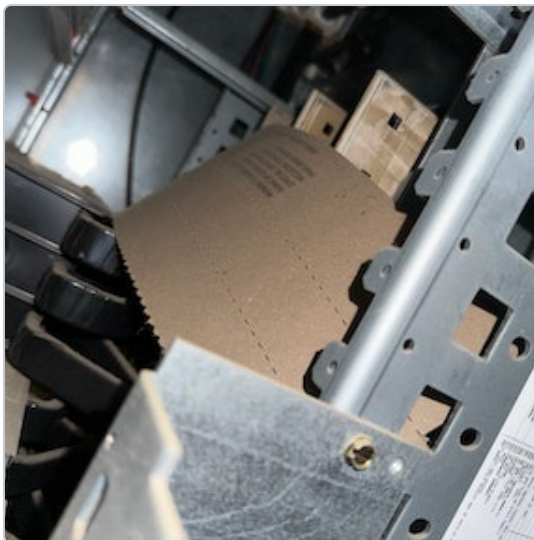


Brandon Goodman - Crescent Construction Services

12/7/2023, 6:33 AM EST

To: Crescent Construction Services

All Media  3 photos



 **Unassigned**

Post 111 - Disconnect Inventory



Neil Gerald - Crescent Construction Services

12/7/2023, 6:33 AM EST

To: Crescent Construction Services

(See Attachment)

Attachments  [Disconnects_Schedule_FL2654.xlsx \(17.7 kB\)](#)

 **Open**

Post 150 - Panel CR Data; Schedule Incorrect



Neil Gerald - Crescent Construction Services

12/7/2023, 6:32 AM EST

To: Assignees, Crescent Construction Services

Assigned To 



Electrical Engineering

No due date

Open

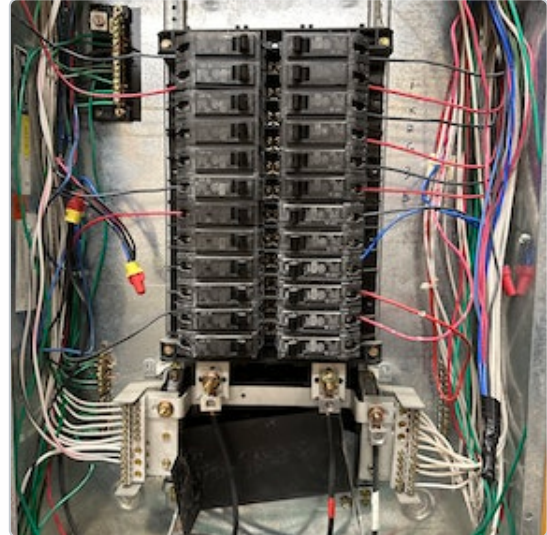
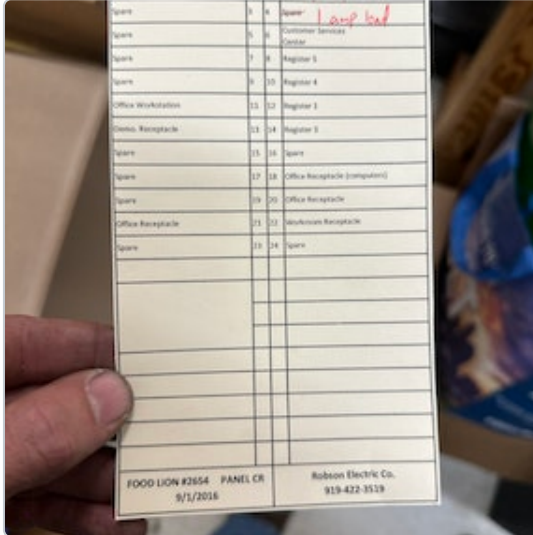


Electrical Contractor

No due date

Open

All Media  2 photos



 **Open**

Post 149 - Panel OW Data; Schedule Incorrect



Neil Gerald - Crescent Construction Services

12/7/2023, 6:32 AM EST

To: Assignees, Crescent Construction Services

Assigned To 



Electrical Engineering

No due date

Open

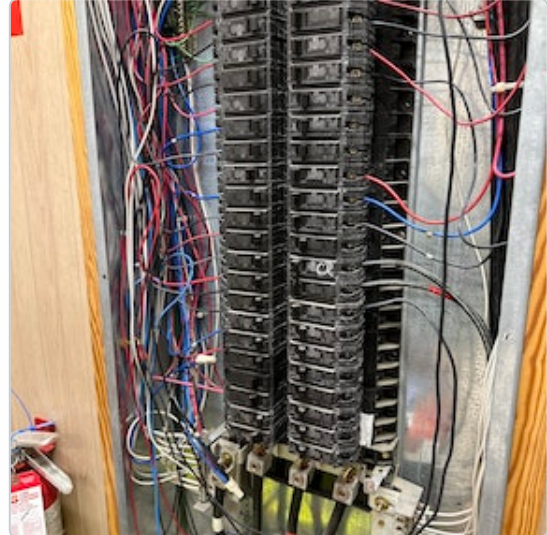
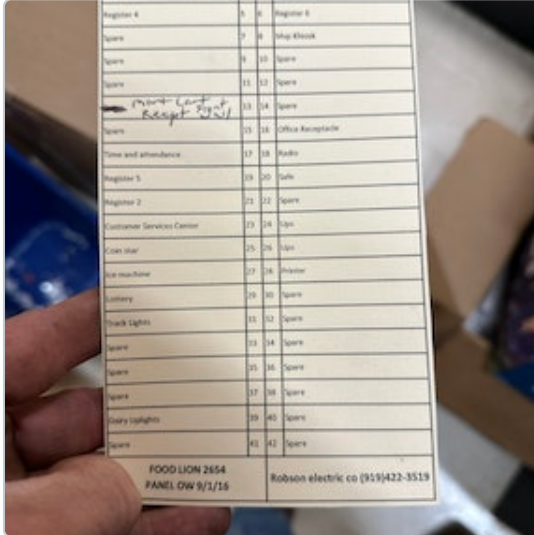


Electrical Contractor

No due date

Open

All Media  2 photos



 **Open**

Post 144 - Panel B Data; Schedule Incorrect



Neil Gerald - Crescent Construction Services

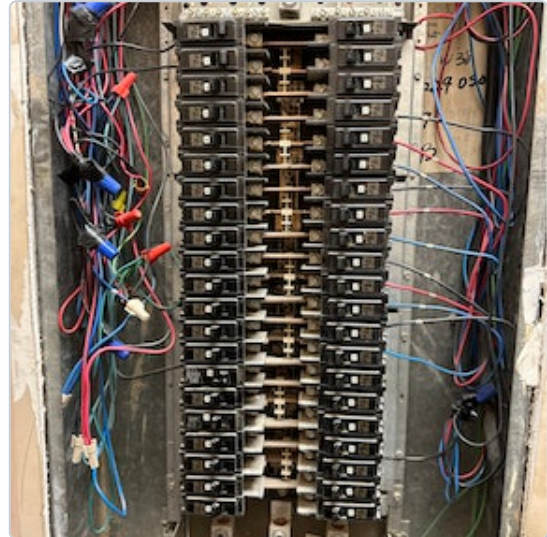
12/7/2023, 6:31 AM EST

To: Assignees, Crescent Construction Services

Assigned To 

-  **Electrical Engineering** No due date **Open**
-  **Electrical Contractor** No due date **Open**

All Media  2 photos



 **Open**

Post 143 - Panel C Data; Schedule Incorrect



Neil Gerald - Crescent Construction Services

12/7/2023, 6:31 AM EST

To: Assignees, Crescent Construction Services

Assigned To 



Electrical Engineering

No due date

Open

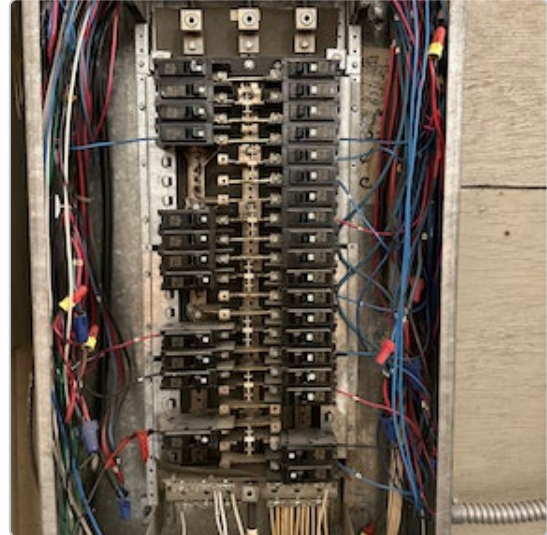


Electrical Contractor

No due date

Open

All Media  2 photos



 **Open**

Post 147 - Panel D Data; Schedule Incorrect



Neil Gerald - Crescent Construction Services

12/7/2023, 6:31 AM EST

To: Assignees, Crescent Construction Services

Assigned To 



Electrical Engineering

No due date

Open

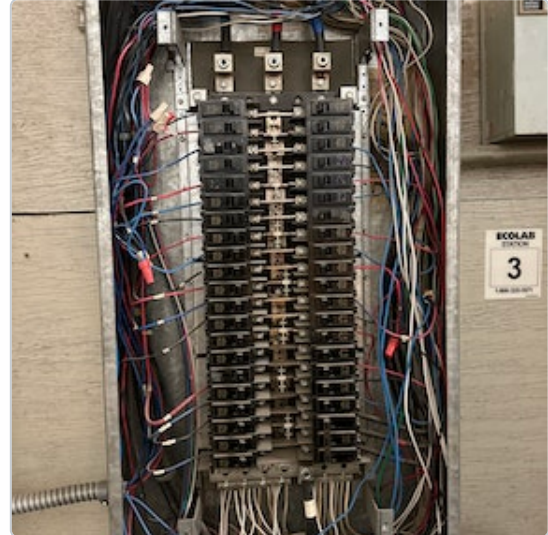
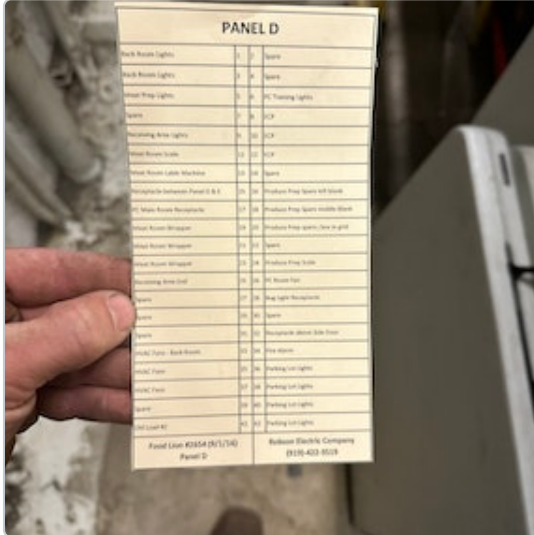


Electrical Contractor

No due date

Open

All Media  2 photos



 **Open**

Post 148 - Panel DB Data; Schedule Incorrect



Neil Gerald - Crescent Construction Services

12/7/2023, 6:30 AM EST

To: Assignees, Crescent Construction Services

Assigned To 



Electrical Engineering

No due date

Open

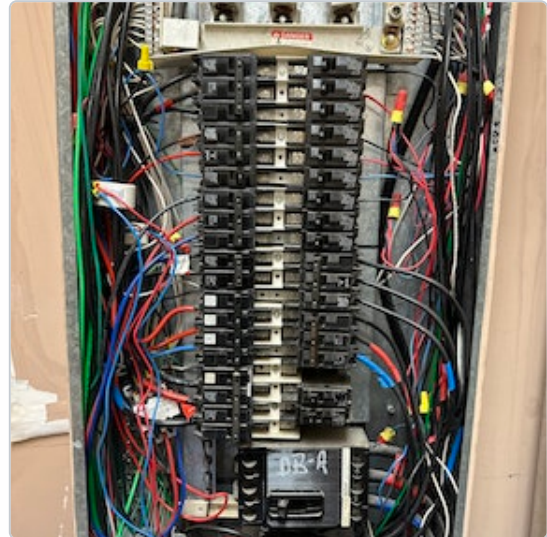
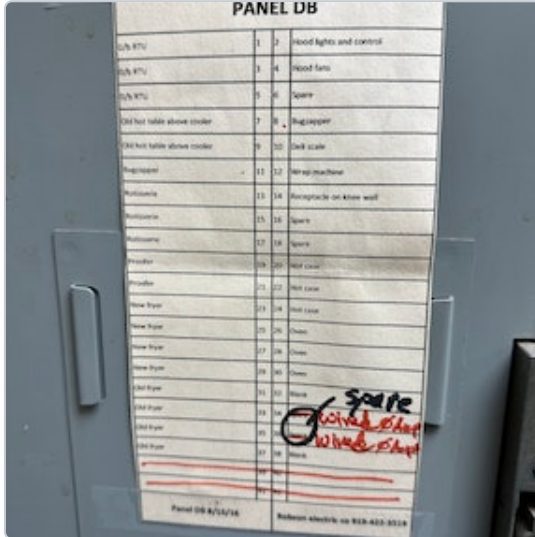


Electrical Contractor

No due date

Open

All Media  2 photos



 **Open**

Post 145 - Panel DB-A Data; Schedule Incorrect



Neil Gerald - Crescent Construction Services

12/7/2023, 6:30 AM EST

To: Assignees, Crescent Construction Services

Assigned To 

 **Electrical Engineering**

No due date

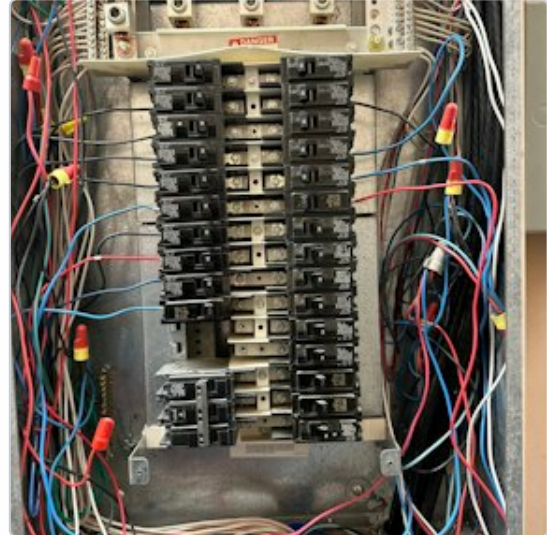
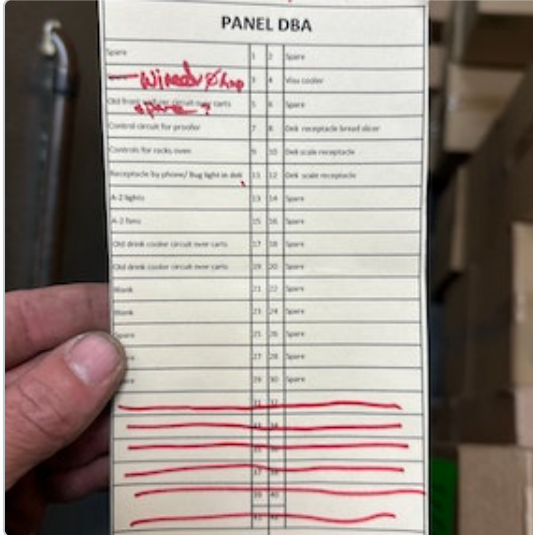
Open

 **Electrical Contractor**

No due date

Open

All Media  2 photos



 **Open**

Post 146 - Panel E Data; Schedule Incorrect




Neil Gerald - Crescent Construction Services

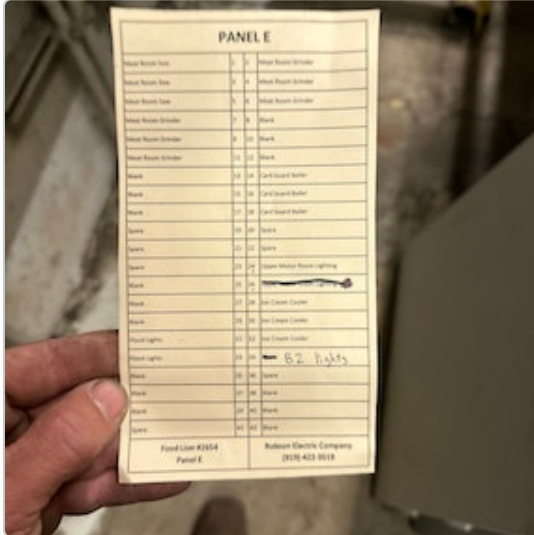
12/7/2023, 6:30 AM EST

To: Assignees, Crescent Construction Services

Assigned To 

-  **Electrical Engineering** No due date **Open**
-  **Electrical Contractor** No due date **Open**

All Media  2 photos



 **Open**

Post 138 - Panel G Data; Schedule Incorrect



Neil Gerald - Crescent Construction Services

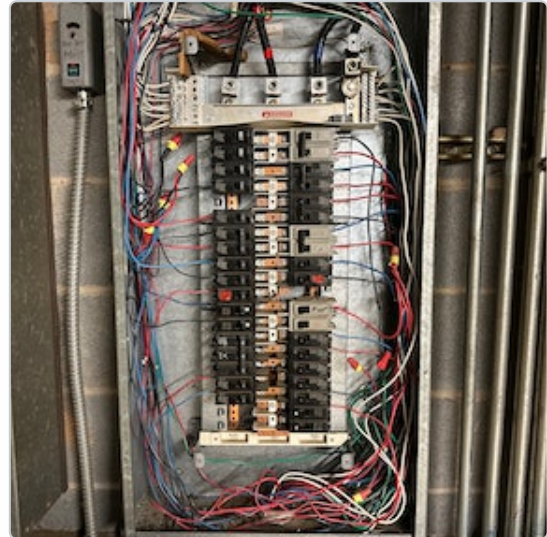
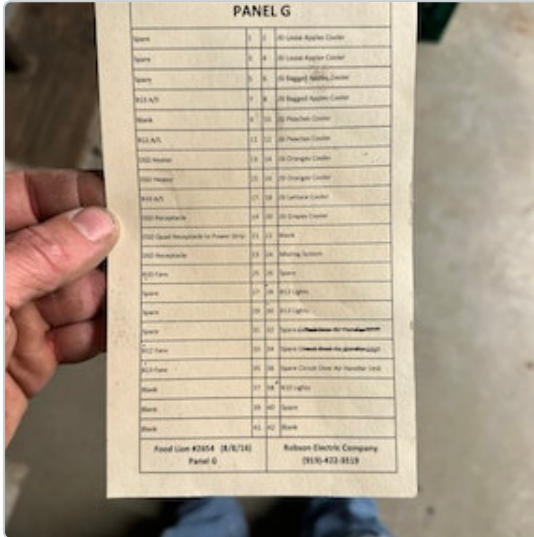
12/7/2023, 6:30 AM EST

To: Assignees, Crescent Construction Services

Assigned To 

-  **Electrical Engineering** No due date 
-  **Electrical Contractor** No due date 

All Media  2 photos



 **Open**

Post 139 - Panel PA Data; Schedule Incorrect



Neil Gerald - Crescent Construction Services

12/7/2023, 6:29 AM EST

To: Assignees, Crescent Construction Services

Assigned To 



Electrical Engineering

No due date

Open

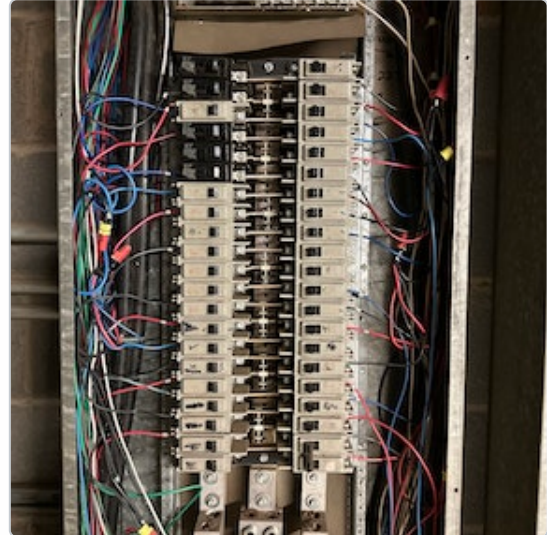


Electrical Contractor

No due date

Open

All Media  2 photos



 **Open**

Post 141 - Panel PA-1 Data; Schedule Incorrect



Neil Gerald - Crescent Construction Services

12/7/2023, 6:29 AM EST

To: Assignees, Crescent Construction Services

Assigned To 



Electrical Engineering

No due date

Open

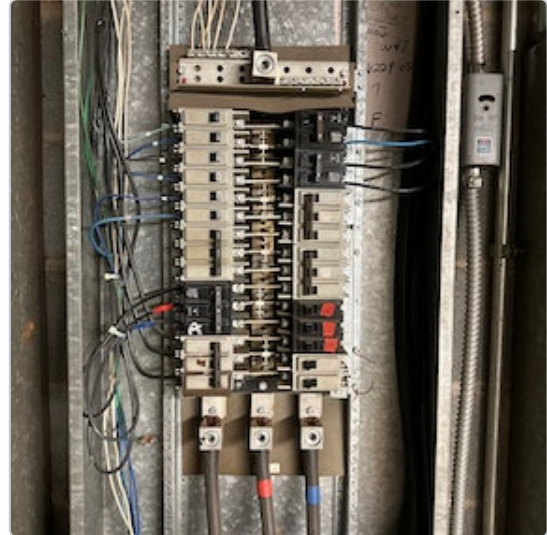
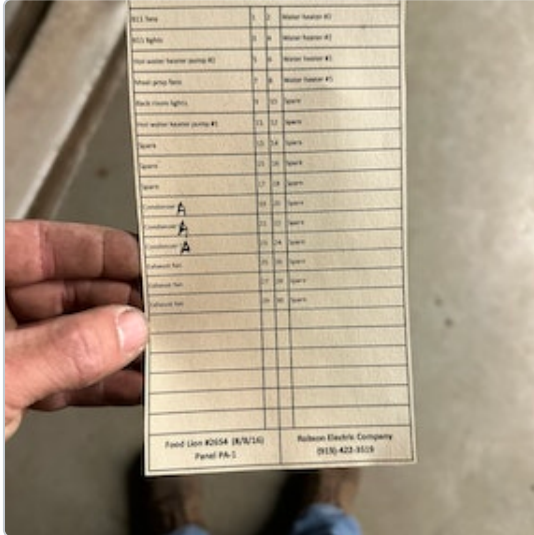


Electrical Contractor

No due date

Open

All Media  2 photos



 **Open**

Post 140 - Panel PB Data; Schedule Incorrect



Neil Gerald - Crescent Construction Services

12/7/2023, 6:29 AM EST

To: Assignees, Crescent Construction Services

Assigned To 



Electrical Engineering

No due date

Open



Electrical Contractor

No due date

Open

All Media  2 photos

